

2024 CHENANGO COUNTY
Including Southern Madison County

Community Directory



 PENNYSAVER

A Norwich and Sidney Pennysavers Publication

Check Us Out For The Best Selection Of Hunting And Fishing Needs In The Central NY Area!

- Lures • Bait • Ammunition
- Fishing Supplies
- Bows • Archery Supplies
- Archery Lanes • Crossbows
- Camping Supplies & Accessories

Largest selection of long and hand guns in the area



Firearms and Ammunition Arrive Daily!



- Live Bait • Licenses
- Gift Certificates Always Available

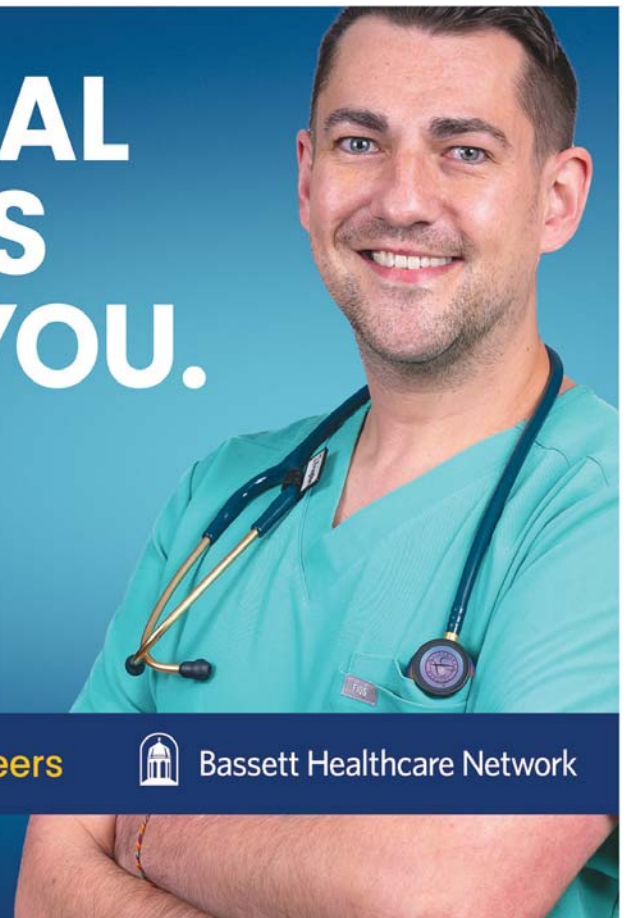
Rte. 12 South, Norwich
607-334-2001

OPEN 7 DAYS A WEEK!



HEALTHY RURAL COMMUNITIES START WITH YOU.

RN Sign-on Bonuses up to \$35,000*



Join our Nursing Team! | bassett.org/careers



Bassett Healthcare Network

* Terms and conditions apply. See job postings for details.

HAVE A REAL ESTATE QUESTION?



Real Estate Services

Howard Hanna
has the answer.SM

CALL YOUR LOCAL OFFICE TODAY!

ANDES OFFICE

221 Main Street
Andes, NY 13731
office: 845-676-3600

ONEONTA OFFICE

75 Market Street
Oneonta, NY 13820
office: 607-433-1020

NORWICH OFFICE

6095 State Hwy 12
Norwich, NY 13815
office: 607-336-8080

SIDNEY OFFICE

39 Main Street
Sidney, NY 13838
office: 607-563-1020

**INTERESTED IN AN
EXCITING CAREER IN
REAL ESTATE?**

Scan here for more information.



CHENANGO COUNTY

HISTORY OF CHENANGO COUNTY

Historically for you and young at heart, this south central New York county is rich in colorful heritage with a scenic splendor that changes like magic with the seasons.

Chenango was formed from Herkimer and Tioga counties on March 15, 1798 and included 11 of the "Twenty Towns" in the "Governors Purchase" which was deeded to the State of New York in a treaty achieved through Governor George Clinton on September 22, 1788. The county also included several other tracts of land extending from present day Broome County to Oneida Lake.

When Chenango County was organized, it had ten towns: DeRuyter, Greene, Jericho, Norwich, Oxford, Brookfield, Cazenovia, Hamilton, Sangerfield and Sherburne. All of these towns have lost territory over the years, dividing to make new towns. In 1804 Sangerfield left Chenango County, and in 1806 Madison County was organized, creating the present north boundary of Chenango County.

The county seat was established in Norwich March 6, 1807, & its historical courthouse was built in the year 1837, replacing a wooden structure that was built shortly after 1807. The stone courthouse is remarkably preserved, and with its statue of the Goddess of Justice, its architecture draws national interest and reputation.

Named for the river which bisects it, Chenango means pleasant river flowing through the land of the bull thistle, a plant which has become the county symbol. It's not inappropriate.

INDEX

Chenango County.....	4-6	Mt. Upton.....	19
Madison County.....	6-7	New Berlin.....	19-20
Afton.....	7-8	North Norwich.....	20-21
Bainbridge.....	9-10	Norwich.....	21-29
Brisben.....	10-11	Otselic.....	29-30
Columbus.....	11	Oxford.....	30-36
Coventry.....	11-12	Pharsalia.....	36
Earlville.....	12-13	Pitcher.....	36-37
Eaton.....	13	Plymouth.....	37
Georgetown.....	13	Poolville.....	37
German.....	13-14	Preston.....	38
Greene.....	14-15	Sherburne.....	38-40
Guilford.....	15-16	Smithville.....	41
Hamilton.....	16-17	Smyrna.....	41-42
Hubbardsville.....	17	South New Berlin.....	42
Lebanon.....	17	Surrounding	
Leonardsville.....	18	Areas.....	43-49
McDonough.....	18-19	Professional	
		Listings.....	50-52

SERVICES FOR CHENANGO COUNTY

CHENANGO COUNTY HABITAT FOR HUMANITY

Decent, affordable housing, small works projects

P.O. Box 161, Guilford, NY 13780

For information, call607-334-7492

Website: chenangohabitat.org

CORTLAND CHENANGO RURAL SERVICES, INC,

Serving the Rural Communities of Cortland and

Chenango Counties: German, Lincklaen, McDonough,

Otselic, Pharsalia, Pitcher, Cincinnatus, Freetown, Solon, Taylor and Willet.

The Nearly New Store - Food Pantry - Food Sense

- No Child Hungry Program - Farmers Market

- Community Gardens & Walk Path - Emergency Programs -

School Supply Program - Holiday Assistance

- Networking with other Agencies.

Email: rursrvs@gmail.com

Website: www.rursrvs.org

2704 Lower Cincinnatus Road

Cincinnatus, NY607-863-3828

HOSPICE and PALLIATIVE CARE of CHENANGO COUNTY

We are a non-profit health care agency that takes care of patients with serious life limiting illness (generally 6 months or less) in their home, nursing home, or hospital room. Referrals are welcome from physicians and other healthcare providers, family members, friends, clergy or from the patient him/herself. Patients receive regular visits from Registered Nurses, LPNs, Social Workers, and specially trained volunteers. Medications and medical equipment is most often included in a patient's plan of care for which Medicare, Medicaid, and private insurance companies reimburse Hospice. Patients rarely, if ever, receive a bill for Hospice services.

For those individuals with a longer life expectancy who are not yet ready for Hospice care, Palliative (comfort) care may be more appropriate. Our staff consults with the palliative patient regarding pain and symptom management. Plus we provide emotional support for those still receiving life-prolonging medical intervention such as chemotherapy or radiation. Our Palliative care services are provided on a sliding fee scale if not covered by your insurance.

Grief support groups get together regularly, and volunteer training is active several times during the year. To schedule an informational visit, or to learn more about any of our programs, call the Norwich office at 607-334-3556.

33-39 Court St., Norwich

- hospicechenango.org



Recycle The Right Way



- 1) All containers must be clean & covers removed
- 2) All paper dry & free of plastic
- 3) In the right bin

- #1 – see through plastic = #1 PETE
- #2 – colored plastic jugs & bottles = #2 HDPE Colored
- #2 – milky color plastic jugs & bottles = #2 HDPE Natural
- #5 – tubs = #5 PP
- all metal food & drink cans = Tin Cans
- clear glass food & drink containers = Clear Glass
- most wine bottles = Green Glass
- most beer/yeast bottles = Brown Glass
- junk mail/magazines/paper = Junk Mail
- newspaper/pennysaver = Newsprint
- cardboard boxes / kraft paper = Cardboard*

* Waxy or plastic coated cardboard is garbage.

Household Batteries

(just tape ends with clear tape)

Fluorescent Light Bulbs

(limit 2 per day per resident)

We Also Accept All Electronics

All **CLEAN** recycling is **FREE!**

3 Convenient Locations

1) NORTH NORWICH TRANSFER STATION

– 6701 NYS Hwy 12, Norwich
M 8–noon, T-Sat 8–4

2) BRISBEN TRANSFER STATION

– 177 Coutermarsh Rd., Greene
M 8–noon, T-Sat 8–4

3) PHARSALIA LANDFILL

– 439 CR 47, Norwich
M–F 8–4, Sat 8–noon



Watch for upcoming recycling programs at the landfill and transfer stations.

**For all recycling and trash disposal questions
call 607-337-1792.**

CHENANGO COUNTY

OPPORTUNITIES FOR CHENANGO, INC.

A community action program for Chenango County, helping people help themselves since 1965. Changing families. Changing lives.

44 West Main St.,
Norwich, NY 13815607-334-7114

FAMILY HEALTH and NUTRITION PROGRAMS:

Women, Infants, and Children Supplemental Food Program (WIC) Farmers' Market Program607-334-7114

CORNELL COOPERATIVE EXTENSION 4H PROGRAM

Education Center
99 N. Broad St., Norwich 13815607-334-5841

FAMILY RESOURCE NETWORK, INC

Parent run, parent driven, non-profit organization serving families of children with special needs in Chenango, Delaware, Otsego, Broome, Tioga and Tompkins counties. We currently facilitate training, conference and multiple support groups.

• Families Together in the Southern Tier
Please call (607) 432-0001 for more information about our services or to be placed on our mailing list.

familyrn.org
email: info@familyrn.org
46 Oneida St., Oneonta, NY 13820.....607-432-0001

SERVICES FOR SENIOR CITIZENS

CHENANGO COUNTY AREA AGENCY ON AGING

Providing a variety of services for senior citizens in Chenango County including:

HIICAP - Information & counseling on health insurance including Medicare, Medicaid, Supplement Plans, EPIC, etc.

HEAP - Home Energy Assistance Program

LONG TERM CARE OMBUDSMAN

LEGAL ASSISTANCE

INFORMATION & ASSISTANCE/OUTREACH

PERSONAL EMERGENCY RESPONSE SYSTEM

PERSONAL SERVICE CARE LEVEL 1

PERSONAL SERVICE CARE LEVEL 2

NUTRITION - Nutrition program (Senior Centers/Home Delivery/Education & Counseling)

HEALTH & COMMUNITY ACTIVITIES- ADVOCACY

County Office Building
5 Court Street, Norwich 13815607-337-1770
www.co.chenango.ny.us

LOCAL ORGANIZATIONS

CHENANGO BIRD CLUB

Call for Meeting Location
or more information.....607-372-1242

CHENANGO COUNTY FARM BUREAU

1028 County Rd. 19., Norwich, NY 13815
www.ccfbny.org607-334-6061

GIRL SCOUTS OF NYPENN

Girl Scouts of NYPENN Pathways is a nonprofit organization chartered by Girl Scouts of the USA to administer theGirl Scout Leadership Experience across New York & Pennsylvania including Chenango and Southern Madison counties. Girl Scouts offers every girl a chance to practice a lifetime of leadership, adventure, and success.

gsnypenn.org • info@gsnypenn.org.
.....1-800-943-4414

TRI COUNTY TEA PARTY PATRIOTS

.....607-316-4753

MADISON COUNTY

MADISON COUNTY

LOCAL SERVICES

MADISON COUNTY OFFICE FOR THE AGING

www.ofamadco.org
.....315-697-5700

AGE SIMULATION PRESENTATIONS

Each year in May, OFA staff and volunteers offer Madison County students the opportunity to experience the aging process.

ALZHEIMER'S SERVICES

If any form of dementia affects you, let us help. All calls are handled confidentially.

CAREGIVER RESOURCE CENTER

Assists caregivers with a lending library of books/videos, support groups, counseling, family support, workshops, a teen program, speakers for group presentations and more.

CASE MANAGEMENT

Coordination of services to adequately meet the needs of those 60 years of age and older.

EISEP

Provides non-medical services such as: Case Management, help with bathing, dressing, eating, shopping, meal preparation, and housekeeping.

HOME DELIVERED MEALS

A combination of hot lunch, cold evening meals, and frozen meals for the weekend.

MADISON COUNTY

INTERNET ACCESS

Stand-alone computer allows seniors to “surf the net” for information on any topic.

LEGAL SERVICES

Includes preparation of legal documents (wills, health care proxies, durable power of attorney) as well as many other matters.

NUTRITION EDUCATION

A Registered Dietitian is available for counseling & assistance with special diet problems, nutrition related questions, and nutrition education.

GRANDPARENT SUPPORT

Information and support designed to help older persons who have taken on the challenging task of parenting the child of a relative, either on a full or part-time basis.

TELE-FRIEND

Volunteers call homebound elderly on a regular basis.

EPIC

Elderly Pharmaceutical Insurance Coverage - Assistance is given in filling out the New York State Pharmaceutical Insurance Coverage application.

HOME HELPER AND HANDYMAN

REFERRAL SERVICE

Help with personal care, housekeeping, meal preparation, marketing, respite and caregivers, yard and walk maintenance, heavy cleaning, minor home repairs. The office provides names of workers. Salary is negotiated between the person requesting the service and the workers.

HILLCAP INSURANCE COUNSELING

Health Insurance Counseling on a one-to-one basis is offered. Assistance with Medicare forms is provided by trained volunteers throughout the county.

OUTREACH

Outreach workers are available at the offices and focal points throughout the county. Outreach workers will make housecalls to those unable to leave their homes.

VOLUNTEER MEDICAL

TRANSPORTATION PROGRAM

A corps of volunteer drivers provides transportation for medical appointments. A transportation dispatcher is on duty Monday through Friday from 9:30 am to 2:00 pm.

AFTON

HISTORY OF AFTON

What is now Afton has been called Clinton, Jericho, South Bainbridge, and Afton. The first settler was Hezekiah Stowell who came to Bettsburgh, the first community in the town. A Vermont Sufferer from Guilford, Vermont, he arrived in 1786. The Landers family of Lenox, Massachusetts, arrived the same year. The Town of Afton was separated from Bainbridge in 1857 to become the youngest town in Chenango County. Afton Village was incorporated in 1892.

The name Afton was suggested by Joseph Bennett Chaffee, and was derived from the poem “Afton Water” by the Scottish poet, Robert Burns. It was intended that Afton would precede Bainbridge in any alphabetical list.

The Indian village of Cunahunta was located near the present Village of Afton. It was destroyed by Col. William Butler in a raid from Schoharie in October of 1778. The islands near Afton were a campsite for the troops of Gen. James Clinton in August, 1779, when he came from Otsego Lake to join Gen. John Sullivan in a campaign against the Indians of then Western New York.

A landmark near the Afton Fairgrounds is the Universalist Church, no longer used for services, but erected in 1818-1819 as a union building by Universalists and Presbyterians.

The former site of the Mormon House on the Afton Fairgrounds is noted by a state marker. Here, Joseph Smith, founder of the Mormon Church, was married to Emma Hale by Justice of the Peace, Zechariah Tarbell, on Jan. 18, 1827.

Afton has never been an industrial town, but in 1916 the Ansco Company built a plant near Afton Lake to use its pure water for the manufacture of nitrocellulose for photographic film. The plant was unprofitable and was razed in the 1930’s.

For many years, Afton Central School has been the largest employer in town.

Two noted Aftonians were Bert Lord and Dr. Carlton J.H. Hayes. Bert Lord was a New York State Assemblyman and Senator and then Representative from New York in the U.S. Congress. Dr. Hayes had a long career as Professor of History at Columbia University and was U.S. Ambassador to Spain during World War II.

Compiled by Charles J. Decker, Afton Town and Village Historian, January 2003.

LOCAL ORGANIZATIONS

HALos, Inc.

HALos ultimate goal is to improve community and family awareness of loss and how loss effects children and their family relationships, their success in school and how to help children to rebuild self-esteem and resiliency.

www.helpafterloss.com

146 Main St., Afton.....607-240-1550

NEAREST HOSPITAL

A.O. FOX HOSPITAL TRI-TOWN CAMPUS

Affiliate of Bassett Healthcare

AFTON

43 Pearl Street West, Sidney
General Information607-563-7080

UHS / CHENANGO MEMORIAL HOSPITAL
179 N. Broad St., Norwich 13815
General Information607-337-4111

SERVICES FOR SENIOR CITIZENS

TRANSDEV
Chenango Co. Public Transit
126 Leilani's Lane, Norwich 13815607-334-7433

AREA OFFICE OF THE AGING
County Office Building
5 Court St., Norwich 13815607-337-1770
www.co.chenago.ny.us

ANNUAL EVENTS

AFTON FAIR607-639-1525

SUMMER STOCK CAR RACING
Afton Fairgrounds on Friday nights.

LOCAL SERVICES

CABLE COMPANY
Spectrum1-866-874-2389

GARBAGE COLLECTION
Contracted locally.

POST OFFICE
Afton Post Office
89 Main St., Afton 13730607-639-2831

POWER AUTHORITY
NYSEG1-800-572-1111

TOWN CLERK
204 County Rd. 39, Afton 13730607-639-1071

VILLAGE CLERK
105 Main St., Afton 13730607-639-1022

VOTING REGISTRATION
Chenango County Board of Elections
5 Court Street, Norwich607-337-1760

LIBRARY/MUSEUM

AFTON FREE LIBRARY
www.4cls.org/afton
105A Main St., Afton607-639-1212

AFTON HISTORICAL SOCIETY MUSEUM
Open Saturday 1-4 pm, Memorial Day to
Labor Day, or by appointment anytime.
www.aftonhistoricalsociety.org
116 Main St., Afton607-743-3139

PARKS/RECREATION

TENNIS COURTS
Afton Central School, 18 Sand St., Afton

CHURCHES

AFTON FIRST BAPTIST CHURCH
30 Caswell Street, Afton607-639-1030

MERCY FELLOWSHIP
967 State Route 41, Afton607-639-1964

ST. ANN'S EPISCOPAL CHURCH
125 Main Street, Afton
stannsafortny.org607-639-2330

SCHOOLS

MIDDLE/HIGH SCHOOL
Grades 6-12
29 Academy St., Afton607-639-8223

ELEMENTARY
Grades K-5
29 Academy St., Afton607-639-8234

GED/ADULT ED Office
29 Acedemy St., Afton607-639-2811

Did You Miss Out?

**...on listing your organization
or activity in our**

2024 COMMUNITY DIRECTORY?

We make every effort to include a complete list of businesses, services, organizations, churches, schools, local governments and activities in your area... but with changes and additions every year, it's possible that a listing of your organization or activity did not appear in the 2024 Community Directory.

If that's the case, let's make sure we have the proper listing of your organization or activity included in the 2025 Community Directory for your area, email your information by January 3, 2025 to:

info@pennysaveronline.com

Subject line: 2025 Community Directory



BAINBRIDGE

HISTORY OF BAINBRIDGE

Over the past 30+ years, Bainbridge has changed considerably. Manufacturing locations have been severely reduced.

The Bainbridge Business Park now is home to Upturn Industries, the Presbytery of the Susquehanna Valley, Rice Development LLC and a Veterans' Clinic.

There are many, many more insurance agencies, restaurants, barbers, hairdressers, contractors, repair services, attorneys, churches, a bank, a credit union, antique stores, auction houses, etc. etc. Due to these many small businesses, our local economy is fairly strong. Bainbridge is a good place to live.

LOCAL ORGANIZATIONS

BAINBRIDGE CHAMBER OF COMMERCE

P.O. Box 2, Bainbridge607-967-8700
www.bainbridge.chamber@yahoo.com

BAINBRIDGE HISTORICAL SOCIETY

38 South Main St, Bainbridge 607-967-8546

BAINBRIDGE LIONS CLUB

Eyeglass donation sites at most school nurses, pharmacies or call for information607-967-7230

BAINBRIDGE SPORTSMEN'S CLUB

146-208 Newton Town Rd., Bainbridge607-967-2222

BOY SCOUTS OF AMERICA

Baden Powell Scout Council.....607-648-7888

JERICOHO ARTS COUNCIL

Sponsoring numerous art & music events in the Town Hall Theatre.

www.jerichoarts.com

15 North Main Street, Bainbridge

Reservations607-288-3882

OUT OF THE WOODWORK PLAYERS

www.Facebook/OWPTHEATRE

15 North Main St., Bainbridge

ANNUAL EVENTS

ANNUAL GENERAL CLINTON CANOE REGATTA

Held in General Clinton Park.

www.canoeregatta.org

SERVICES FOR SENIOR CITIZENS

AREA OFFICE ON AGING

County Office Building

5 Court St., Norwich 13815607-337-1770

www.co.chenango.ny.us

LOCAL SERVICES

CABLE COMPANY

Spectrum1-866-874-2389

9th Annual Autumn Open Air Market

Saturday,
September 21st
9AM to 3PM

Fun
for
all
ages!

featuring both free and paid activities,
games, demonstrations and more!

General Clinton Park - St Hwy 7, Bainbridge

www.localvendorconnection.com

facebook.com/autumnmarket13733

Contact: Mel via txt 607-242-8473 or email 6zero7merchants@gmail

Browse • Shop • Play

Handcrafted Clothing, Jewelry,
Decor, Candles; Small + Local
Businesses | Music | Art | Pony
Rides | Games | Photo Opps |
Antiques Auction | Carriage
Rides | Local Farmers & Bakers

- S&S Food Truck

- Everything Bagelry

- Baristacrats Coffee Bar
and much more to enjoy!



BAINBRIDGE

GARBAGE COLLECTION

Contracted locally.

POST OFFICE

Bainbridge Post Office
17 E. Main St., Bainbridge 13733607-967-3333

POWER AUTHORITY

NYSEG1-800-572-1111

TELEPHONE COMPANY

Frontier Business Office1-800-921-8101
Spectrum1-866-874-2389

TOWN CLERK

15 N. Main St., Bainbridge607-967-3781

TRANSDEV

Chenango Co. Public Transit
126 Leilani's Lane, Norwich 13815607-334-7433

VILLAGE CLERK

33 W. Main St., Bainbridge 13733607-967-7373

VOTING REGISTRATION

Chenango Co. Board of Elections
County Office Building
5 Court St., Norwich 13815607-337-1760

PARKS/RECREATION

TENNIS COURTS

Bainbridge Elementary School, Greenlawn Ave., Bainbridge

SWIMMING POOL

Corner of Front and Walnut Streets, Bainbridge

GENERAL CLINTON PARK

Route 7, Bainbridge

CHURCHES

FIRST UNITED METHODIST CHURCH

27 North Main Street, Bainbridge.....607-967-2782

FIRST PRESBYTERIAN CHURCH

3 Church Street, Bainbridge.....607-967-8021
<https://bainbridgepresbyterianchurch.weebly.com>

LIBRARY/MUSEUM

BAINBRIDGE FREE LIBRARY

13 N. Main Street.....607-967-5305

BAINBRIDGE MUSEUM

38 South Main St.607-967-8546

SCHOOLS

JUNIOR & SENIOR HIGH

Bainbridge-Guilford Central School (grades 7-12)
18 Juliand St., Bainbridge.....607-967-6300

ELEMENTARY

Bainbridge Elementary School (grades 2-6)
43 Greenlawn Ave., Bainbridge607-967-6300
Guilford Elementary School (grades Pre-K thru 1st)
138 School St., Guilford607-895-6300

NEAREST HOSPITAL

UHS / CHENANGO MEMORIAL HOSPITAL

179 N. Broad St., Norwich 13815
General Information607-337-4111

A.O. FOX HOSPITAL TRI-TOWN CAMPUS

Affiliate of Bassett Healthcare
43 Pearl Street West, Sidney
General Information607-563-7080

BRISBEN

BRISBEN

LOCAL SERVICES

GARBAGE COLLECTION

Contracted locally.

POST OFFICE

Oxford Post Office
2 South Washington Ave., Oxford 13830607-843-2851

POWER AUTHORITY

NYSEG1-800-572-1111

TELEPHONE COMPANY

Frontier1-800-921-8101

TOWN CLERK

Greene Town Clerk
51 Genesee St., Greene 13778607-656-4191

VOTING REGISTRATION

Chenango County Board of Elections
County Office Building
5 Court St., Norwich 13815607-337-1760

NEAREST HOSPITAL

UHS / CHENANGO MEMORIAL HOSPITAL

179 N. Broad St., Norwich 13815
General Information607-337-4111

SCHOOLS

DEPENDING ON WHERE YOU LIVE:

Greene Central School
Primary School (K-2)
127 Elementary Lane, Greene607-656-4161
Intermediate School (3-5)
105 Elementary Lane, Greene607-656-9891
Middle School (6-8)
40 S. Canal Street, Greene607-656-4161

High School (9-12)
40 S. Canal Street, Greene607-656-4161

Oxford Academy & Central School
Middle School (5-8)
12 Fort Hill Park, Oxford.....607-843-2025
High School (9-12) & Elementary (UPK-4)
50 S. Washington Ave, Oxford.....607-843-2025

COLUMBUS

HISTORY OF COLUMBUS

Columbus was formed February 11, 1805 from Brookfield in Madison County and was originally the 17th Township. Hamlets are Columbus, Columbus Corners, Columbus Center, Sweets, Tralette (obsolete) and Edmeston Station.

The name Columbus was suggested by Dr. Tracy Robinson and was first settled in 1781 by Col. Converse.

NEAREST HOSPITAL

CHENANGO HEALTH NETWORK
24 Conkey Ave., Norwich607-337-4128

UHS / CHENANGO MEMORIAL HOSPITAL
179 N. Broad St., Norwich 13815
General Information607-337-4111

COMMUNITY MEMORIAL HOSPITAL
150 Broad St., Hamilton 13346
General Information315-824-1100

LOCAL SERVICES

POST OFFICE
Depending on where you live:
Sherburne Post Office
4 W. State St., Sherburne 13460607-674-2761
New Berlin Post Office
8 Genesee St., New Berlin 13411607-847-6557

POWER AUTHORITY
Depending on where you live:
Sherburne Village Electric
15 W. State St., P.O. Box 704
Sherburne 13460607-674-2300
Or NYSEG1-800-572-1111

TELEPHONE COMPANY
Frontier1-800-921-8101

TOWN CLERK.....607-847-8891

VOTING REGISTRATION
Chenango County Board of Elections
County Office Building
5 Court St., Norwich 13815607-337-1760

COVENTRY

HISTORY OF COVENTRY

Coventry was formed from Greene February 7, 1806 and was named for Coventry, Conn. Hamlets are Coventry, Coventryville, and Bobell Hill.

Coventry was named after Coventry, Conn., with the first settler being Simon Jones in 1785. He settled on the old Chenango Road near the center of the town.

CHURCHES

COVENTRYVILLE FIRST CONGREGATIONAL UCC
113 Cty. Rd. 27, Bainbridge607-639-1841

NEAREST HOSPITAL

UHS / CHENANGO MEMORIAL HOSPITAL
179 N. Broad St., Norwich 13815
General Information607-337-4111

LOCAL SERVICES

GARBAGE COLLECTION -Contracted locally.

POST OFFICE Depending on where you live:
Greene Post Office
11 S. Canal St., Greene 13778607-656-4233
Harpursville Post Office
3619 Route 79, Harpursville 13787607-693-2420
Bainbridge Post Office
17 E. Main St., Bainbridge 13733607-967-3333

POWER AUTHORITY
NYSEG1-800-572-1111

TOWN CLERK.....607-656-8602

TELEPHONE COMPANY
Frontier1-800-921-8101

VOTING REGISTRATION
Chenango County Board of Elections
County Office Building, 5 Court St., Norwich 13815
.....607-337-1760

SCHOOLS

Greene Central School (grades 9-12)
40 S. Canal St., Greene 13778607-656-4161

Harpursville Jr./Sr. High (grades 7-12)
54 Main St., Harpursville 13787607-693-8101

MIDDLE/ HIGH SCHOOL
Afton Central School (grades 6-12)
29 Academy, Afton 13730607-639-8223
Greene Central Middle School (grades 6-8)
40 S. Canal St., Greene 13778607-656-4161

ELEMENTARY

- Afton Central School (grades K-5)
29 Academy, Afton 13730**607-639-8234**
- Greene Central Primary School (K-2nd)
127 Elementary Lane**607-656-4161**
- Greene Central Intermediate School (3rd -5th)
105 Elementary Lane**607-656-9891**
- W.A. Olmsted Elementary (K-6)
54 Main St., Harpursville 13787**607-693-8101**

EARLVILLE

EARLVILLE

LOCAL SERVICES

- CABLE COMPANY**
Spectrum**1-866-874-2389**
- GAME AND DOG LICENSES**
In Chenango County: Contact Sherburne Town Clerk
In Madison County: Contact Hamilton Town Clerk
- GARBAGE COLLECTION** - Contracted locally.
- POST OFFICE**
Earlville Post Office
11 S. Main St., Earlville, 13332.....**315-691-4141**
- POWER AUTHORITY**
NYSEG**1-800-572-1111**



BLACK CAT
ANTIQUES & GIFTS

14 E. Main St., Earlville, NY
315-691-5721
Hours: Tues.-Fri. 9-4; Sat. 9-2

WE ARE A PRIMITIVE AND COUNTRY MIX
*of old purposeful clutter and handmade items,
furniture, one of a kind wreaths and arrangements.
Springtime felt rabbits and more.*

Warm Glow Candles and Wax Melts (made in the USA)
Scents like: Clove, Cinnamon, Homespun Harvest and more!

Like us on Facebook! ~ Sorry we no longer accept Credit Cards~

We can build the outrageous or elegant, the simple or complex structures.



- Block Work to Framing
- Sheet Rock to Electric
- Kitchens to Bathrooms
- Post Beam to Custom Wood Work
- Land Clearing to Pond Building
- Patios to Retaining Walls
and Everything in Between

1-800-723-9092
315-691-4900
*Don't be fooled by the Name.
We're the Best in the Game!*
www.citiscapellc.com
Senior Citizen & Military Discounts

EARLVILLE

TELEPHONE COMPANY
Frontier**1-800-921-8101**

VILLAGE CLERK
Village Office, 8 N. Main St., Earlville**315-691-2121**

VOTING REGISTRATION
In Chenango County:
Chenango County Board of Elections
County Office Building
5 Court St., Norwich 13815**607-337-1760**

In Madison County:
Madison County Board of Elections
138 N. Court St., PO Box 666
Wampsville 13163**315-366-2231**

WATER DEPARTMENT
Village Office, N. Main St., Earlville**315-691-2121**

CHURCHES

FIRST BAPTIST CHURCH
9 West Main Street, Earlville 13332
.....**315-691-4301**

NEAREST HOSPITAL

UHS / CHENANGO MEMORIAL HOSPITAL
179 N. Broad St., Norwich 13815
General Information**607-337-4111**

COMMUNITY MEMORIAL HOSPITAL
150 Broad Street, Hamilton 13346
General Information**315-824-1100**

LIBRARY/MUSEUM

EARLVILLE FREE LIBRARY
4 N. Main St., Earlville**315-691-5931**

LOCAL ORGANIZATIONS

CORNELL COOPERATIVE EXTENSION
4H PROGRAM- Chenango County
.....**607-334-5841**



Riolo & Son
Construction

Specializing in Kitchen and Bath Remodeling
Discover The Possibilities For Your Home!

*Featuring the latest trends and design options in countertops,
cabinets, lighting, tiles, fixtures and much more.*

Call Today for a **FREE Consultation** Military & Senior Citizen
607-745-7914 Discounts Available

SCHOOLS

SENIOR HIGH

Sherburne-Earlville Central School (grades 9-12)
13 School St., Sherburne 13460.....**607-674-7380**

MIDDLE SCHOOL

Sherburne-Earlville Central School (grades 6-8)
13 School St., Sherburne 13460.....**607-674-7350**

ELEMENTARY

Sherburne Elementary School (grades K-5)
15 School St., Sherburne**607-674-7336**

EATON

HISTORY OF EATON

Eaton was set off from Hamilton Feb. 6, 1807. Joshua Leland may be called the first settler in Eaton, though he was preceded a few months by John and James Salisbury, brothers, from Vermont, who, in the autumn of 1792, located within the borders of the town, and commenced a clearing, but were driven away in early winter by the intense cold and did not return.

First settled in 1793 by Joshua Leland; Sherburne, Mass., Benjamin Morse, Simeon Gillette, Levi Bonney, Elijah Haydon, Dan'l and Alby and two Morris'.

CHURCHES

EATON COMMUNITY BIBLE CHURCH

5845 Brooklyn St., Eaton **315-684-3312**

MORRISVILLE COMMUNITY CHURCH

(Presbyterian USA)

3824 Swamp Rd., Morrisville 13408 **315-684-3314**

ST. JOAN OF ARC

6 Brookside Dr., Morrisville 13408**315-684-9551**

LOCAL ORGANIZATIONS

CORNELL COOPERATIVE EXTENSION

4H PROGRAM- Madison County

100 Eaton St., Morrisville 13408**315-684-3001 ext. 1**

NEAREST HOSPITAL

COMMUNITY MEMORIAL HOSPITAL

150 Broad St., Hamilton 13346**315-824-1100**

LOCAL SERVICES

CABLE COMPANY

Spectrum**1-866-874-2389**

GARBAGE COLLECTION

Contracted locally.

POST OFFICE

Eaton Post Office
4084 Route 26, Eaton, 13334.....**315-684-9500**

TOWN CLERK

35 Cedar St., Morrisville 13408.....**315-684-9111**
Town of Eaton Office Building

GEORGETOWN

HISTORY OF GEORGETOWN

Georgetown was formed from DeRuyter, April 7, 1815. First settled in 1804 by Ezra Sexton, Litchfield, Conn., John C Payne, Elijah Olmstead, Apollos Drake, Joseph Bishop, Bethel Hurd, Eleazer Hunt; Stafford, Conn., and Olmstead Brown.

LOCAL SERVICES

CABLE COMPANY

Spectrum**1-866-874-2389**

POST OFFICE

Georgetown Post Office
1008 Rte. 26, Georgetown, 13072**315-837-4470**

VOTING

Madison County Board of Elections**315-366-2231**

SCHOOLS

ELEMENTARY- SENIOR HIGH

Otselic Valley Central School
125 County Rte. 13A, S. Otselic 13155**315-653-7218**

GERMAN

HISTORY OF GERMAN

German was formed from DeRuyter March 21, 1806 and was named for Gen. Obadish German, an early prominent settler of North Norwich. It contains part of the Gore, and once Brackel Township. Hamlets are German, Livermore Corners, East German and Five Corners.

The first settlers were either Benjamin Cleveland in 1795 or Abraham Livermore in 1796.

LOCAL SERVICES

GARBAGE COLLECTION - Contracted locally.

POST OFFICE

Cincinnati Post Office
2763 Lower Cincinnati Rd., Cincinnati 13040
.....**607-863-4340**

POWER AUTHORITY

NYSEG**1-800-572-1111**

TAXES - TOWN CLERK

105 County Rd. 8, McDonough 13801**607-647-9234**

TELEPHONE COMPANY

Frontier**1-800-921-8101**

GERMAN

VOTING REGISTRATION

Chenango County Board of Elections
County Office Building
5 Court St., Norwich 13815607-337-1760

SCHOOLS

SECONDARY SCHOOL (7-12)

Cincinnatus Central School
2809 Cincinnatus Rd., Cincinnatus 13040.....607-863-3200

ELEMENTARY (UPK-6)

Cincinnatus Central School
2809 Cincinnatus Rd., Cincinnatus 13040.....607-863-3200

NEAREST HOSPITAL

UHS / CHENANGO MEMORIAL HOSPITAL

179 N. Broad St., Norwich 13815
General Information607-337-4111

GUTHRIE CORTLAND REGIONAL MEDICAL CENTER

134 Homer Ave., Cortland 13045
General Information607-756-3500

**Make the
feelings mutual.**



**Check out the
PENNYSAVER**

For All Your Automotive Needs!

GREENE

HISTORY OF GREENE

Greene was "erected" March 15, 1798 and was named for Gen. Nathaniel Greene of Revolutionary War fame. It is watered by Chenango River and Round Pond. Hamlets and villages are Greene, Brisben, (Brisbin or East Greene), Geneganslet, once bustling, now a widening of the road; Read and Page Brook. It was formed from parts of Union and Jericho.

Greene was settled in 1792 by Stephen Ketchum of Ballston.

LOCAL SERVICES

CABLE COMPANY

Spectrum1-866-874-2389

GARBAGE COLLECTION - Contracted locally.

POST OFFICE

11 S. Canal St., Greene 13778607-656-4233

POWER AUTHORITY

Town Residents: NYSEG1-800-572-1111
Village Residents: Greene Village Electric
34 Cherry St., Greene.....607-656-8311

TELEPHONE COMPANY

Frontier1-800-921-8101

TOWN CLERK

51 Genesee St., Greene607-656-4191

VILLAGE CLERK

49 Genesee St., Greene607-656-4500

VOTING REGISTRATION

Chenango County Board of Elections
County Office Building
5 Court St., Norwich 13815607-337-1760

SERVICES FOR SENIOR CITIZENS

BRIGHTMAN SENIOR CENTER

Provides a variety of activities, programs and a nutritious meal. Reservations needed.
25 Birdsall St., Greene 13778607-656-4789

LIBRARY/MUSEUM

MOORE MEMORIAL LIBRARY

Public Computer Center
59 Genesee St., Greene 13778607-656-9349

CHURCHES

GREENE ASSEMBLY OF GOD

1035 County Rd. 9, Greene 13778607-656-8015

BEREAN BIBLE CHURCH

109 County Rd. 2, Greene 13778607-656-8413

CENTRAL BAPTIST CHURCH

GREENE

37 S. Chenango St., Greene 13778607-656-4512

FIRST CONGREGATIONAL CHURCH U.C.C.

28 N. Chenango St., Greene607-656-4923
www.uccgreene.org

FIRST UNITED METHODIST CHURCH

32-34 S. Chenango St., Greene607-656-8363
www.fumcgreene.com

GREENE C.M. ALLIANCE CHURCH

126 Meadow Drive, Greene 13778607-656-8777

IMMACULATE CONCEPTION ROMAN CATHOLIC

1180 State Highway 206, Greene 13778607-656-9546

SMITHVILLE CENTER CHRISTIAN CHURCH

142 Hammerle Rd., Greene, NY 13778607-843-6371

ZION EPISCOPAL CHURCH

10 N. Chenango St., Greene 13778607-656-9502

NEAREST HOSPITAL

UHS / CHENANGO MEMORIAL HOSPITAL

179 N. Broad St., Norwich 13815
General information607-337-4111

FAMILY COUNSELING & EDUCATIONAL CENTER

www.christian-counseling-ny.com
email: thecfee@hotmail.com
109 County Rd. 2, Greene607-656-7828

ANNUAL EVENTS

ANNUAL LABOR DAY PICNIC

Come for a community picnic where the food is already prepared. Games, horse show, bingo, rides, live entertainment, chicken BBQ and more!
.....607-296-5319

ANNUAL APPLEFEST

On the Ball Flats in Greene.
All kinds of apple dishes, arts & crafts, cider pressing, sweet shoppe and bake sale, food stands, pumpkin painting, entertainment all day, plus more. Free admission. No Pets.
Sponsored: First United Methodist Church - Greene

THE GREATER GREENE COMMUNITY ARTS & CRAFT FESTIVAL

A community event that takes place on the 4th Saturday in July every year in the village of Greene, NY

SCHOOLS

SENIOR HIGH (grades 9-12)

40 S. Canal St., Greene607-656-4161

MIDDLE SCHOOL (grades 6-8)

40 S. Canal St., Greene607-656-4161

INTERMEDIATE SCHOOL (3-5)

105 Elementary Lane, Greene607-656-9891

PRIMARY SCHOOL (K-2)

127 Elementary Lane, Greene607-656-4161

HEAD START

Greene Head Start
37 S. Chenango St., Greene 13778HS: 607-656-9367

DAY CARE

Chenango County Department of Social Services
Attention: Children's Services
County Office Building
5 Court St., Norwich 13815607-337-1500

LOCAL ORGANIZATIONS

THE GREENE, NY LIONS CLUB

A community organization that takes pride in giving back. The Greene Lions Club owns and operates a 40 acre Community Park, Little League fields and a running/walking track. This is managed and cared for entirely by local members. We also offer rental of the pavilion
<https://e-clubhouse.org/sites/greeneny>..... 607-656-9707

GUILFORD

HISTORY OF GUILFORD

Guilford was formed from Oxford April 3, 1813 as Eastern. Its name was changed March 21, 1817. Waters are Unadilla River, Guilford Lake, and North Pond. Hamlets are Rockdale, Guilford, East Guilford, Yaleville, Latham's Corners, Guilford Center, Mount Upton, Rockwell's Mills, Van Buren's Corners, Gospel Hill and Coburns.

Guilford was first settled by Ezekiel Wheeler in 1787 just north of Mount Upton.

CHURCHES

GUILFORD UNITED METHODIST CHURCH

1277 County Rd. 35, Guilford607-895-6838

NEAREST HOSPITAL

A.O. FOX HOSPITAL TRI-TOWN CAMPUS

Affiliate of Bassett Health Care
43 Pearl St. West, Sidney, 13838607-563-7080

UHS / CHENANGO MEMORIAL HOSPITAL

179 N. Broad St., Norwich 13815
General Information607-337-4111

LOCAL ORGANIZATIONS

GUILFORD HISTORICAL SOCIETY

For information607-895-6532

GUILFORD

KLEE HOUSE, INC.

1240 Main Street, Guilford607-895-6390

LOCAL SERVICES

GARBAGE COLLECTION - Contracted locally.

POST OFFICE

Guilford Post Office
1261 County Rd. 35, Guilford, 13780607-895-6552

POWER AUTHORITY

NYSEG1-800-572-1111

TOWN CLERK

223 Marble Rd.607--895-9966

TELEPHONE COMPANY

Frontier1-800-921-8101

VOTING REGISTRATION

Chenango County Board of Elections
Chenango County Office Building
5 Court St., Norwich607-337-1760

SCHOOLS

JUNIOR & SENIOR HIGH

Bainbridge-Guilford Central School (Grades 7-12)
18 Juliand St., Bainbridge 13733607-967-6300

ELEMENTARY

Greenlawn Elementary School (Grades 2-6)

43Greenlawn Ave., Bainbridge 13733607-967-6300
Guilford Elementary School (Grades Pre-K through 1st)
138 School St., Guilford607-895-6300

HAMILTON

HISTORY OF HAMILTON

Hamilton was formed from Paris, March 5, 1795. It originally embraced Nos. 2, 3, 4 and 5 of the Twenty Townships, and was reduced to its present limits Feb. 6, 1807, by the formation of Eaton, Lebanon and Madison, which correspond respectively with Nos. 2, 5 and 3 of the Twenty Townships.

First settlement in 1792 by John Wells; Amherst, Mass., Abner Nash.; Amherst, Mass., Patrick W. Shields; originally from Scotland and John Muir, originally from Scotland.

CHURCHES

FIRST BAPTIST CHURCH

27 Broad St., Hamilton315-824-2780

PARK UNITED METHODIST CHURCH

17 Broad St., Hamilton315-824-1894

ST. MARY'S CATHOLIC CHURCH

16 Wylie St., Hamilton.....315-824-2164

ST. THOMAS EPISCOPAL CHURCH

12 1/2 Madison St., Hamilton315-824-1745

NEAREST HOSPITAL

COMMUNITY MEMORIAL HOSPITAL

150 Broad St., Hamilton, 13346
General Information315-824-1100

UHS / CHENANGO MEMORIAL HOSPITAL

179 N. Broad St., Norwich
General Information607-337-4111

LIBRARY

HAMILTON PUBLIC LIBRARY

13 Broad St., Hamilton, 13346315-824-3060

LOCAL SERVICES

CABLE COMPANY

Spectrum1-866-874-2389

GARBAGE COLLECTION

Contracted locally

POST OFFICE

Hamilton Post Office
32 Broad St., Hamilton 13346315-824-2350

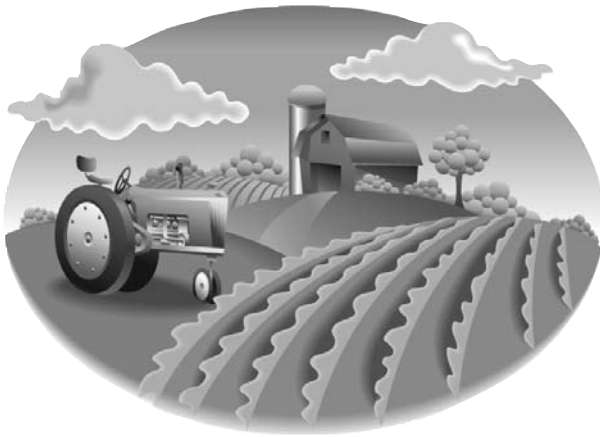
POWER AUTHORITY

Village Residents Municipal Electric Company
3 Broad St., Hamilton315-824-1111
Town Residents
NYSEG1-800-572-1111

TELEPHONE COMPANY

Frontier1-800-921-8101

Check out the
 **PENNYSAVER**



For All Your Farm Needs.

www.pennysaveronline.com

TOWN CLERK

38 Milford St., Suite 8, Hamilton315-824-3380

VILLAGE CLERK

3 Broad St., Hamilton315-824-1111

LOCAL ORGANIZATIONS

CORNELL COOPERATIVE EXTENSION

4-H PROGRAM.....315-684-3001 ext. 1

HUBBARDSVILLE

HISTORY OF HUBBARDSVILLE

The hamlet of Hubbardsville, founded in 1813, is located 6 miles southeast of Hamilton. It is an agricultural area known in its early days for the growing of hops. Today still, fields of crops abound. Operating present day is a Post Office located in a country store complete with gas pumps. A Few businesses and a campground that holds an antique tractor show/pull each July.

The Hubbardsville area is perfect for outdoor activities year round as it borders NY State land complete with horse & snowmobile trails

NEAREST HOSPITAL

COMMUNITY MEMORIAL HOSPITAL

150 Broad St., Hamilton 13346
General Information.....315-824-1100

UHS / CHENANGO MEMORIAL HOSPITAL

179 N. Broad St., Norwich 13815
General Information.....607-337-4111

LOCAL SERVICES

POST OFFICE

Hubbardsville Post Office
2434 Poolville Rd., Hubbardsville 13355315-691-2300

POWER AUTHORITY

NYSEG1-800-572-1111

TOWN CLERK

38 Milford St., Hamilton315-824-3380

TELEPHONE COMPANY

Frontier1-800-921-8101

VOTING REGISTRATION

Madison County Board of Elections315-366-2231

SCHOOLS

JUNIOR/ SENIOR HIGH

Hamilton Central School
47 W. Kendrick Ave., Hamilton315-824-6300

ELEMENTARY

Hamilton Central School
47 W. Kendrick Ave., Hamilton315-824-6300

LEBANON

HISTORY OF LEBANON

Lebanon was formed from Hamilton Feb. 6, 1807. It was one of the six towns originally patented to Col. William S. Smith, who soon after transferred the major portion of it to Sir William Pultney, reserving, however, a large tract bordering the Chenango. There were, therefore, two agencies active in promoting the settlement of the lands in this town.

First settled in 1791 by Joshua Smith, native of Franklin, Conn. Col. William S. Smith sent his brother Justus B., to act as agent for sale of lands.

NEAREST HOSPITAL

COMMUNITY MEMORIAL HOSPITAL

150 Broad St., Hamilton 13346
General Information.....315-824-1100

LOCAL ORGANIZATIONS

CORNELL COOPERATIVE EXTENSION

4H PROGRAM
Farm and Home Center
100 Eaton St., Morrisville 13408.....315-684-3001

LOCAL SERVICES

GARBAGE COLLECTION

Contracted locally or individually.

POST OFFICE

Earlville Post Office
11 S. Main St., Earlville 13332315-691-4141

POWER AUTHORITY

NYSEG1-800-572-1111

TOWN CLERK

1210 Bradley Brook Rd., Earlville315-837-4220

TELEPHONE COMPANY

Frontier1-800-921-8101

VOTING REGISTRATION

Madison County Board of Elections315-366-2231



Nathan Foote

Senior Account Executive

Phone: 607-337-3032

E-Mail: nfoote@pennysaveronline.com



Your customer service representative for the
Norwich & Oneonta-Cooperstown
Pennsavers.

LEONARDSVILLE

LEONARDSVILLE

LOCAL SERVICES

GARBAGE COLLECTION

Contact Town Clerk, Brookfield 13314**315-899-3364**

POST OFFICE

2008 State Rte. 8, Leonardsville 13364.....**315-855-4300**

PAY TAXES

Property Tax: Town Clerk
Brookfield.....**315-899-3364**

VOTER REGISTRATION

Madison County Board of Elections
.....**315-336-2231**

NEAREST HEALTH CARE

BASSETT HEALTHCARE NETWORK

Bassett Medical Center
One Atwell Road, Cooperstown.....**607-547-3456**
.....**1-800-BASSETT**
(227-7388)

BASSETT HEALTHCARE NETWORK

544 West Main Street
West Winfield Health Center**315-822-6348**

SCHOOLS

MT. MARKHAM CENTRAL SCHOOL

500 Fairground Road
West Winfield 13491.....**315-822-2800**

MCDONOUGH

HISTORY OF MCDONOUGH

McDonough was the 13th of the 21 townships, formed from Preston April 17, 1816 and named for Commodore Thomas Macdonough of the U.S. Navy. Hamlets are McDonough and East McDonough. It contains Geneganslet Lake, Ludlow Pond, and Bowman Lake State Park.

McDonough at one time was referred to by historians as MacDonough and was found in 1795 by Sylvanus Moore, James Talmadge, Nathaniel Locke, Capt. Joshua Buhi, Loring and Emory Willard and Henry Ludlow.

Did you know ...

East McDonough contained a union church; a district school, kept in the basement of the church; a small grocery, kept by Jeremiah Colvert; and a cheese factory. Deacon Elijah Thompson kept store for several years in a building later used as a dwelling by John Franklin. Thompson was succeeded by his son Giles who traded three or four years in a building where widow of Edson Gale later lived. The building was originally a barn or shop and had been moved four times. Ephraim Sprague, who came from the east, opened a store in the same building about 1865. He kept a general stock of goods. Philo Fosgate began trading after Sprague's death; but

MCDONOUGH

removed Sprague's building to the corner opposite the old tavern stand. He sold to his brother-in-law Elijah W. Thompson.

Jeremiah Colvert, Jr. came here from McDonough village in March of 1875 to keep a small grocery.

The population of East McDonough by 1880 was about forty-three. Based on "History of Chenango & Madison Co" 1774-1880 by James H. Smith

NEAREST HOSPITAL

UHS / CHENANGO MEMORIAL HOSPITAL

179 N. Broad St., Norwich 13815
General Information**607-337-4111**

GUTHRIE CORTLAND MEMORIAL HOSPITAL

134 Homer Ave., Cortland 13405
General Information**607-756-3500**

LOCAL ORGANIZATIONS

MCDONOUGH VOLUNTEER FIRE DEPARTMENT

1625 State Rte. 220**607-647-5552**

LOCAL SERVICES

CABLE COMPANY

Spectrum**1-866-874-2389**

GARBAGE COLLECTION - Contracted locally.

POST OFFICE

McDonough Post Office
1600 State Highway 220, 13801**607-647-5453**

POWER AUTHORITY

NYSEG**1-800-572-1111**

TOWN CLERK

PO Box 145, McDonough 13801**607-647-9234**

TELEPHONE COMPANY

Frontier**1-800-921-8101**

VOTING REGISTRATION

Chenango County Board of Elections
Chenango County Office Building
5 Court St., Norwich**607-337-1760**

SCHOOLS

SENIOR HIGH

Oxford Academy and Central School (Grades 9-12)
50 S. Washington Ave., Oxford 13830.....**607-843-2025**

MIDDLE SCHOOL

Oxford Academy and Central School (Grades 5-8)
12 Fort Hill Park, Oxford 13830**607-843-2025**

ELEMENTARY

Oxford Academy and Central School (Grades K-4)
50 S. Washington Ave., Oxford 13830.....**607-843-2025**

PARKS/RECREATION

BOWMAN LAKE STATE PARK

745 Bliven Sherman Rd., East of McDonough
.....607-334-2718

SERVICES FOR SENIOR CITIZENS

Senior Centers provide a variety of activities, programs and a nutritious meal. Reservations are needed in advance.
For dates/reservations.....607-337-1770

MT. UPTON

MT. UPTON

CHURCHES

FIRST BAPTIST CHURCH OF MT. UPTON

1749 St. Hwy. 8, Mt. Upton.....607-764-8361

NEAREST HOSPITAL

A.O. FOX HOSPITAL / TRI-TOWN CAMPUS

Affiliate of Bassett Health Care
43 Pearl St. West, Sidney 13838607-563-7080

UHS / CHENANGO MEMORIAL HOSPITAL

179 N. Broad St., Norwich 13815
General information607-337-4111

LOCAL ORGANIZATIONS

BOY SCOUTS OF AMERICA

Baden Powell Scout Council607-648-7888

GIRL SCOUTS OF NYPENN

gsnypenn.org800-943-4414

ROCKDALE ROD & GUN CLUB

312 Rockdale Rd., Mt. Upton607-764-8679

LOCAL SERVICES

GARBAGE COLLECTION

Contracted locally.

POST OFFICE

Mt. Upton Post Office,
1753 Rte. 8, Mt. Upton 13809607-764-8463

POWER AUTHORITY

NYSEG1-800-572-1111

TOWN CLERK

Town Taxes
223 Marble Rd., Guilford.....607-895-9966

TELEPHONE COMPANY

Frontier1-800-921-8101

SCHOOLS

GILBERTSVILLE-MT. UPTON SCHOOLS

Elementary K-6, High School 7-12
693 State Hwy 51, Gilbertsville607-783-2207

NEW BERLIN

HISTORY OF NEW BERLIN

New Berlin was formed from Norwich April 3, 1807. Part of it was annexed to Sherburne in 1853. Unadilla River is the East boundary. It contains Chenango Lake (Mathewson Pond), Jackson Pond, New Berlin Reservoir, and Whites Pond. Hamlets and villages are New Berlin, South New Berlin, Amblerville, New Berlin Center, Sages Corners, and Davis Crossing. The town's name was changed to Lancaster May 9, 1821 but was returned to New Berlin March 22, 1822. It was settled in 1790 by Samuel Anderson, Silas Burlingame and Daniel Scribner of Ballston.

LIBRARY/MUSEUM

NEW BERLIN PUBLIC LIBRARY

15 So. Main St., New Berlin607-847-8564

CHURCHES

BEREAN BAPTIST CHURCH

18 Genesse St., New Berlin607-847-6288

FIRST UNITED METHODIST CHURCH

51 S. Main St., New Berlin607-847-6350

ST. ANDREW'S EPISCOPAL CHURCH

40 S. Main St., New Berlin607-847-6361

ST. THERESA'S ROMAN CATHOLIC CHURCH

24 N. Main St., New Berlin607-847-6851

COME SHOP WITH US

Where offering quality products, knowledge
of our products and customer service
is our #1 priority!

SOME OF WHAT WE OFFER

- All Animal Feeds
- Pet & Livestock Supplies
- Wild Bird Seed & Supplies
- Large Selection of Nuts and Bolts
- Lawn & Garden - Seeds, soil, fencing, tools and much more
- Local Meats - Grass Fed Beef & Pasture Raised Pork

We Also Offer Over 25 Locally Made Products;

Cheeses, Heidelberg Bread, Ulica Coffee, Apothecary Chocolates, Lumps Spices, Soap, Baked Goods, Stoltzfus Dairy Products, Eggs and much more!!

HOMESTEAD PET & FARM SUPPLY

3 Railroad Street, New Berlin, NY 13411

(607) 847-6173



Hours: Mon.- Fri. 8:00 am - 5:30 pm;
Sat. 8 am - 1 pm; CLOSED Sunday

Like us on Facebook

NEW BERLIN

NEAREST HOSPITAL

UHS / CHENANGO MEMORIAL HOSPITAL

179 N. Broad St., Norwich 13815
General information607-337-4111

A.O. FOX MEMORIAL HOSPITAL

Affiliate of Bassett Health Care
1 Norton Ave., Oneonta 13820
General information607-432-2000

LOCAL SERVICES

CABLE COMPANY

Spectrum1-866-874-2389

GARBAGE COLLECTION: Contracted individually.

POWER AUTHORITY

NYSEG1-800-572-1111

POST OFFICE

New Berlin Post Office
8 Genesee St., New Berlin 13411607-847-6557

TELEPHONE COMPANY

Frontier1-800-921-8101

TOWN CLERK

30 N. Main St., New Berlin607-847-8909

VILLAGE CLERK

13 S. Main St., New Berlin607-847-6389

VOTING REGISTRATION

Chenango County Board of Elections
Chenango County Office Building
5 Court St., Norwich607-337-1760

SERVICES FOR SENIOR CITIZENS

UNADILLA VALLEY SENIOR ACTIVITY CENTER

Senior Centers provide a variety of activities, programs.
51 South Main St., New Berlin 13411607-847-6350

SCHOOLS

SENIOR HIGH

Unadilla Valley Central School (grades 9-12)
4238 Rte. 8, New Berlin 13411607-847-7500

MIDDLE SCHOOL

Unadilla Valley Central School (grades 5-8)
4238 Rte. 8, New Berlin 13411607-847-7500

ELEMENTARY

Unadilla Valley Central School (grades K-4)
4238 Rte. 8, New Berlin 13411607-847-7500

HEAD START

41 South Main St., New Berlin, NY 13411
.....HS 607-847-8587

NORTH NORWICH

HISTORY OF NORTH NORWICH

North Norwich was formed from Norwich April 7, 1849 and contains Mead's Pond and the Chenango River. Hamlets are North Norwich (Galena), King's Settlement, Woods, Plasterville, Whaupanaucaw, and Sherburne Four Corners, which centers the four towns of North Norwich, Sherburne, Plymouth and Smyrna.

North Norwich was first settled in 1795 by Jonathan Dan who settled on the Smyrna Road and was immediately followed by Jonathon Meade, Jacob Grow, Jonah Poyer, Abram and Edward Per Lee and Isaac Bockee.

EST. 1985

FARMERS PLACE

BUTCHER & DELI

Come Check Us Out!
Full line of USDA meats, Jerky & Snack Stix
Deli Stocked with Boar's Head Meats & Cheeses
Beef & Processing Services

256 COUNTY HIGHWAY 20
NEW BERLIN N.Y. 13411
607-847-8234
WWW.JOESFARMERSPLACE.NET
LIKE & FOLLOW US @JOESFARMERSPLACE

Check Out The

PENNYSAVER

For All Your
Pet Needs!

NORTH NORWICH

NEAREST HOSPITAL

UHS / CHENANGO MEMORIAL HOSPITAL

179 N. Broad St., Norwich 13815
General information607-337-4111

COMMUNITY MEMORIAL HOSPITAL

150 Broad St., Hamilton 13346
General information315-824-1100

SCHOOLS

SENIOR HIGH: Depending on where you live:

Sherburne-Earlville Central School (grades 9-12)
13 School St., Sherburne 13460.....607-674-7380
Unadilla Valley Central School (grades 9-12)
4238 Rte. 8., New Berlin 13411607-847-7500

MIDDLE SCHOOL: Depending on where you live:

Sherburne-Earlville Central School (grades 6-8)
13 School St., Sherburne 13460.....607-674-7350
Unadilla Valley Central School (grades 5-8)
4238 Rte. 8, New Berlin 13411607-847-7500

ELEMENTARY: Depending on where you live:

Sherburne Elementary (grades K-5)
15 School St., Sherburne 13460.....607-674-7336
Unadilla Valley Central School (grades K-4)
4238 Rte. 8, New Berlin 13411607-847-7500

BOCES PRESCHOOL and DAYCARE

(provides services for 3-5 year old children)
6678 County Rd. 32, Norwich.....607-335-1298

LOCAL SERVICES

GARBAGE COLLECTION

Contracted locally or taken individually to landfill.

NORTH NORWICH POST OFFICE

168 County Rd. 23, North Norwich, 13814
.....607-334-3401

POWER AUTHORITY

NYSEG1-800-572-1111



TYRRELL'S
tents & rentals llc
Party Tents, Tables, Chairs, Coolers
607-316-2337
Will.Tyrrell@yahoo.com

NORWICH

HISTORY OF NORWICH

Early settlers came largely from New England, especially Massachusetts and Connecticut. These early residents brought with them the name "Norwich," originally brought from England to Connecticut, to name their new home in New York. Norwich incorporated as a village on April 17, 1816 and incorporated as a city in 1914.

When the Erie Canal began construction in 1817, the Chenango valley and the City of Norwich were still a frontier area. The success of the Erie Canal stimulated hopes and imaginations of inland residents with the prospect of better connections to markets and supplies. Despite an adverse report by the Canal Commissioners, the New York State Legislature authorized the construction of the Chenango Canal in 1833. The Chenango Canal connected the Erie Canal just west of Utica to the Susquehanna River at Binghamton. Construction began in 1834, and the canal opened in 1837. While the canal significantly improved passenger and freight movement for the Chenango valley, it failed to increase the population or have a radical impact on the valley's economy. Ultimately, it was closed in 1878 due to declining revenues after the construction of railroads in the area.

The earliest industry in Norwich included sawmills, grist-mills, woolen mills, and a hammer factory. As the area grew and manufacturing and transportation systems became more sophisticated, industry expanded to include the Norwich Furniture Company, the Norwich Silk Manufacturing Company, a piano and a violin factory and, most importantly for the long-term economic impacts on the City, the Norwich Pharmacal Company, started by the Reverend Lafayette Moore in 1885. Incorporated in 1889, it grew to be the principal industry of Norwich, manufacturing such products as Pepto-Bismol and Norwich Aspirin. Headquartered in the City, the company provided not only manufacturing jobs but a significant number of management, research, and other professional opportunities.

The City of Norwich has been through dramatic changes in the last decade. In the future it will build on its considerable assets, including historic resources, ample infrastructure, quality community services, and strong sense of community to stimulate new growth and development.

NEAREST HOSPITAL

UHS / CHENANGO MEMORIAL HOSPITAL

179 N. Broad St., Norwich 13815
General information607-337-4111

CHENANGO HEALTH NETWORK

19 Eaton Ave., Norwich 13815607-337-4128
www.chenangohealth.org

LOCAL ORGANIZATIONS

AGRICULTURE DEVELOPMENT COUNCIL OF CHENANGO COUNTY

99 N. Broad St., Norwich 13815607-334-5841

NORWICH

AUXILIARY AND VOLUNTEER SERVICES
CHENANGO MEMORIAL HOSPITAL
 Chenango Memorial Hospital607-337-4151

BOY SCOUTS OF AMERICA
 Baden Powell Scout Council
 2150 NYS Rte. 12, Binghamton607-648-7888

BULLTHISTLE MODEL RAILROAD SOCIETY, INC.
 Hours: Saturdays 1:00-4:00 pm and other times by appt.
 33 Rexford St., Norwich607-336-4166
 www.bmrs.org

CHENANGO COUNTY COUNCIL OF THE ARTS
 27 West Main St., Norwich607-336-2787

www.chenangoarts.org

CHENANGO COUNTY 4-H LEADERS ASSOCIATION
607-334-5841

CHENANGO COUNTY HISTORICAL SOCIETY
 45 Rexford St., Norwich607-334-9227

CHENANGO SPCA www.chenangospca.org
 6160 County Road 32, Norwich607-334-9724

CHENANGO COUNTY GRANGE
 167 Cty. Rd. 32A, Norwich607-334-9046
 chenangogrango.org

RIVERSIDE REDEMPTION CENTER 

NOW SPONSORING SATURDAY BOTTLE & CAN DRIVES
 Call Us For Details

NO LIMIT ON ORDERS

Please separate **GLASS** from **PLASTIC & CANS**

5012 State Highway 12, Norwich.
 Near the halfway house bridge

Phone: 607-316-0408
Hours: Open Monday thru Saturday

WE DO LARGE PICK UPS TOO! CALL TODAY

We are a full service, family run, family oriented funeral home. We work with you, making it as easy as possible.

Proud to be Norwich's ONLY locally owned funeral home.



Wilson Funeral Home
 68 South Broad St.,
 Norwich, NY
607-336-3993
www.wilsonfh.com

Member of the Pre Plan since 1988.
 John Gawronski - Owner/Manager
 John Antonowicz - Director

ASPHALT PAVING

Residential • Commercial • Driveways • Parking Lots
 New Work • Repairs • Seal Coating • Concrete Sidewalks



Yacano's
 PAVING

607
 336-1400

Driveway
 & Parking Lot
 Sealing

NORWICH

CHENANGO MEMORIAL HOSPITAL SUPPORT GROUPS

For information, community relations607-337-4111

CORNELL COOPERATIVE EXTENSION

99 N. Broad St., Norwich 13815607-334-5841

FAIR ASSOCIATION

(CHENANGO AGRICULTURAL SOCIETY)

Norwich, NY 13815607-334-9198

IROQUOIS SPORTSMAN'S CLUB INC.

Rod & Gun Club

290 Chenango Lake Rd., Norwich 13815607-674-6546

LEATHERSTOCKING CORVETTE CLUB

Leatherstockingcorvetteclub.com607-334-6969

LT. WARREN EATON POST 189.

29 Sheldon St., Norwich, 13815607-334-9414

NORWICH COMMUNITY KITCHEN

Offering a free hot meal every Tuesday.

Doors open at 4 pm, serving dinner at 5:15 pm.

Everyone is welcome!

St. Bartholomew Parish Center

81 East Main St., Norwich607-337-2215

NORWICH ELKS LODGE #1222

14 East Main St., Norwich607-334-9261

COMPARE

When it comes to your vision it's the right thing to do!!



COMPARE SELECTION
COMPARE SERVICE
COMPARE PRICE

When you compare the **entire package...** we are sure you will be happy you came to Chenango Vision Center.



John Birdsall, Optician
Dr. Glenn Stein, Optometrist

Corner of East Main Street and East River Road, Norwich

607-336-2020

HOURS: Mon., Tues., Thurs., Fri. 9-5; Wed. 9-7

www.chenangovision.com



39 years
serving
Norwich and
surrounding
areas.



TRY THEM
NOW



1

THE PHILLY

Steak, peppers, onions,
2x provolone cheese,
mayonnaise, toasted

THE OUTLAW™

Steak, peppers, onions,
2x pepper jack cheese,
Baja Chipotle, toasted

2



3

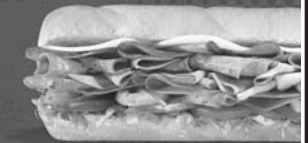
THE MONSTER™

Steak, peppers, onions,
2x Monterey Cheddar cheese,
bacon, Peppercorn Ranch, toasted

SUPREME MEATS

Pepperoni, salami, capicola, ham,
provolone cheese, lettuce, tomatoes,
onions, banana peppers,
MVP Parmesan Vinaigrette®

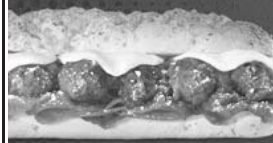
4



5

BELLA MOZZA

Capicola, ham, BelGioioso® fresh
mozzarella, spinach, tomatoes,
onions, banana peppers,
MVP Parmesan Vinaigrette®



6

THE BOSS

Pepperoni, meatballs with
marinara, BelGioioso® fresh
mozzarella, Parmesan cheese,
toasted

THE MEXICALI

Rotisserie-style chicken,
2x Pepper Jack cheese, smashed
avocado, lettuce, tomatoes,
onions, Baja Chipotle, toasted

7



3 New Sidekicks



Now at your
Norwich Subway!

- Footlong Churros
- Footlong Pretzels
- Footlong Cookies

SUBWAY

Call or stop by today! (607) 336-6450
5636 Route 12, Norwich

NORWICH

NORWICH V.F.W. POST #2782

61-63 East Main Street, Norwich 13815607-336-8700

PINK DOOR THRIFT SHOP

9 South Broad St., Norwich.....607-337-4301

THE PLACE

(Christian Neighborhood Center of Norwich, Inc.)

22 East Main St., Norwich.....607-336-9696

ROLLING ANTIQUERS OLD CAR CLUB (RAOCC)

Represents the Norwich Region
of the Antique Automotive
Club of America (AACA). <http://raocc.org>.

.....607-373-5086

YMCA

68-70 N. Broad St., Norwich, NY 13815607-336-9622

CHURCHES

BROAD STREET UNITED METHODIST CHURCH

74 N. Broad St., Norwich607-334-2895

CALVARY BAPTIST CHURCH

75 Calvary Dr., Norwich607-334-6698
www.cbcnorwich.com

CANASAWACTA VALLEY FREE METHODIST

4299 St. Hwy. 23, Norwich607-334-3073
www.cvfree.church

R. J. FAHY FUNERAL HOME

A Tradition of Service Since 1939



Michael C Wright
FUNERAL DIRECTOR

R.J. Fahy Funeral Home
116 North Broad St., Norwich, NY 13815
607-334-8833

www.fahyfuneralhome.com

**Handicap Accessible Facility*



David P Beardsley
MANAGER



*Your
Hometown
Jeweler*

McNeil  Jewelers

A Family Tradition Since 1946.
25 South Broad Street, Norwich
607-334-2617

www.mcneiljewelers.com

WE BUY GOLD!



Get Answers To Your Medicare Questions Today!

**Call or text me for a private
and no cost consultation!**

As your independent health care resource,
I can offer you Medicare Plans from
several private insurance companies...
**So you're guaranteed to get the
plan that may be best for you!**

Eileen Fetzko Hoffman

Independent Sales Agent

607-316-0255

www.Medicarevalue.com/EileenHoffman

NORWICH

CHRIST EVANGELICAL LUTHERAN CHURCH
94 N. Broad St., Norwich607-334-3431

CITY CHURCH OF NORWICH
97 Silver St., Norwich607-336-6811

EMMANUEL EPISCOPAL CHURCH
37 West Main St., Norwich607-334-8801
www.emmanuelnorwich.org

FIRST BAPTIST CHURCH
10 W. Park Place, Norwich607-336-2509

NORWICH JEWISH CENTER
72 South Broad St., Norwich.....607-334-2691

SOVEREIGN GRACE COMMUNITY CHURCH
www.sgccnorwich.org
27 West Main St., Norwich607-334-7422

ST. BARTHOLOMEW'S CATHOLIC CHURCH
81 East Main St., Norwich.....607-337-2215

ST. PAUL'S CATHOLIC CHURCH
30 Pleasant St., Norwich607-337-2216

SERVICES FOR SENIOR CITIZENS

NORWICH SENIOR CENTER
Senior Centers provide a variety of activities, programs and a nutritious meal. Reservations needed.



Tyler Slater
Senior Account Executive
Phone: 607-337-3026
E-Mail: tslater@pennysaveronline.com



Your customer service representative for the Norwich, Sidney, Oneonta-Cooperstown and Wharton Valley Pennysavers.



NORWICH MONUMENT
Over 125 Years of Excellent Service



Norwich Monuments LLC
Markers, Monuments, Mausoleums, Stone Lettering & Cleaning
Jason Flanagan - Owner
6395 State Highway 12, Norwich, NY 13815
(607) 334-3944 Office • (607) 316-6586 Cell
Email: Norwichmonuments@yahoo.com | Website: www.norwichmonuments.com

The Team At NORWICH OUTDOOR POWER EQUIPMENT



Sales / Office



Dawn **Jon** **Andrew**
Office Manager Owner Sales

Customer Service



Rich
Service Manager

- Knowledgeable Sales Team
- Same Great Service Techs
- Same Great Product Line
- Same Convenient Location

Service Techs



Rich **Charlie**

NORWICH OUTDOOR POWER EQUIPMENT

5876 County Rd. 32- East River Road, Norwich
607-334-4378 • www.norwichope.com

Hours:
8:00-5:00 Monday-Friday
and
8:00-12:00 on Saturday



NORWICH



**We Support
50 Shades
of Purrrfect
Sanctuary**

Annie's Thrift Shop

Something
for EVERYONE
with FAMILY
FRIENDLY PRICING

Like us on Facebook & Instagram.
607-244-3771

OPEN Monday – Saturday • 9 am – 5 pm
5311 NY-12 Norwich 2 miles south of Norwich

10% OFF Your Purchase

Only one coupon
per person per visit.
Cannot be combined
with other discounts.



**Annie's
Thrift Shop**
Expires 5/31/24

American Legion Post 189
29 Sheldon St., Norwich607-337-1770

LOCAL SERVICES

CABLE COMPANY

Spectrum1-866-874-2389

CITY CLERK

1 City Plaza, Norwich607-334-1230

DOG AND GAME LICENSES

1 City Plaza, Norwich607-334-1230

GARBAGE COLLECTION - Contracted locally.

POST OFFICE

Norwich Post Office
20-22 East Main St., Norwich 13815607-334-4134

POWER AUTHORITY

NYSEG1-800-572-1111

TELEPHONE COMPANY

Frontier1-800-921-8101

TRANSPORTATION- TRANSDEV

Chenango County Public Transit
126 Leilani's Lane, Norwich 13815607-334-7433

VOTING REGISTRATION

Chen. County Board of Elections, County Office Building
5 Court St., Norwich 607-337-1760



COMFORT^o

Achieve a whole new degree of comfort with
LG Air Conditioning Technologies

- Personalized room-by-room control keeps everyone happy
- Control from anywhere via LG SmartThinQ[®] app on a smartphone
- Ducted and non-ducted systems offer broad design flexibility
- Industry-leading energy efficiency and superior heating

Discover why homeowners who choose LG Air
Conditioning Technologies enjoy greater comfort.



- **All systems qualify
for current rebates**

Contact your local LG representative
for more information:
607-336-5572

6053 Co. Rd. 32, Norwich, NY 13815
brothers@centralny.twcbc.com



©2023 LG Electronics USA, Inc., Englewood Cliffs, NJ. All rights reserved. LG Life's Good is a registered trademark of LG Corporation.

IMPACT MARKETING CONCEPTS



Specializing in crafting digital experiences that transcend the ordinary and amplify your brands impact in the online realm

- **Website Design**
- **Graphic Design**
- **Social Media Management**
- **Google Business Management & Optimization**
- **Search Engine Optimization**
- **Google Display/ Search Ads**

ImpactMarketingConcepts.com • 607-318-1289

Powered by the Pennysaver

NORWICH

The Perfect Handmade Gift...

Made In Chenango Gift Shop & Gallery

25-27 North Broad St. • Norwich, NY 13815
607-334-3355 • www.madeinchenango.com

* ATTENTION * LOCAL ARTISTS & CRAFTSPEOPLE -
CHECK OUR WEBSITE OR STOP IN TO ASK ABOUT
MEMBERSHIP. WE'D BE PLEASED TO MEET YOU!



SCHOOLS

SENIOR HIGH

Norwich Senior High School (grades 9-12)
89 Midland Dr., Norwich607-334-1600

JUNIOR HIGH

Norwich Middle School (grades 6-8)
89 Midland Dr., Norwich607-334-1600

ELEMENTARY

Stanford Gibson Primary School (grades K-2)
8 Ridgeland Rd., Norwich607-334-1600

Perry Browne Intermediate School (grades 3-5)
31 Beebe Ave., Norwich607-334-1600

PRIVATE

Holy Family
Early childhood- 8th grade.
17 Prospect St., Norwich, NY607-337-2207

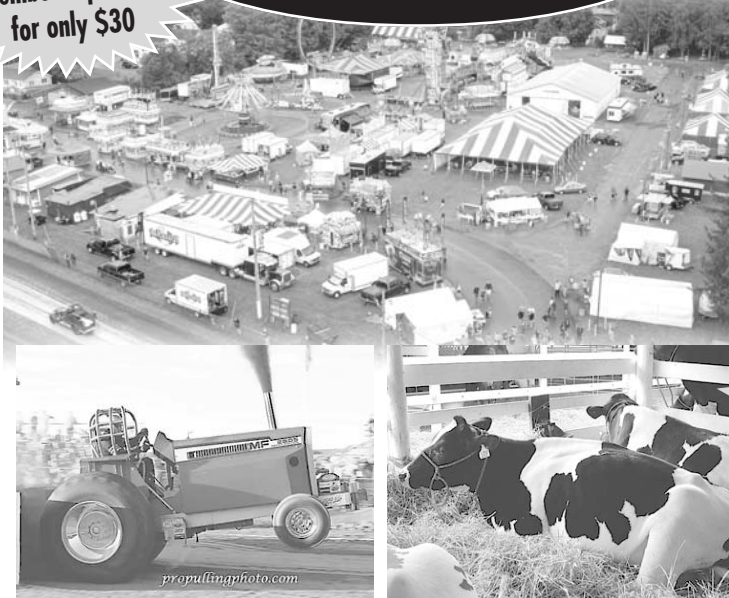
Valley Heights Christian Academy
Pre-K through Grade 12
75 Calvary Drive, Norwich607-336-8422

DAY CARE

BOCES Preschool & Day Care
6678 County Rte. 32, Norwich607-335-1298

177th Annual CHENANGO COUNTY FAIR

Buy a
Membership Ticket
for only \$30



Great Value,
Great Attractions,
Something for
Everyone!



- Demo Derby
- Rides & Games
- Music
- Harness Racing
- Horse Shows
- Tractor Pulls
- Conservation
- 4-H Exhibits
- Agricultural Exhibits
- Flower Exhibits
- Chenango Garden Clubs

Website: chenangofair.com
Email: chenangocofair@outlook.com
Fair Office: 607-334-9198

NORWICH

Norwich Family YMCA
68-70 N. Broad St., Norwich607-336-9622

CONTINUING EDUCATION

DCMO BOCES
6678 County Rd. 32607-335-1200

SUNY Morrisville, Norwich Branch Campus
20 Conkey Ave., Norwich607-334-5144

ANNUAL EVENTS

JULY 13th & 14th

Gus Macker 3-on-3 Basketball Tournament,
Always 2nd weekend in July.
Over 400 teams expected. Sponsored by
Norwich Family YMCA. Contact607-336-9622

AUGUST 7th -11th

Chenango County Fair at Chenango County Fairgrounds,
Norwich. Admission charged
chenangofair.com. email: chenangofair@outlook.com
..... 607-334-9198

AUGUST 16th & 17th

Annual Chenango Blues Festival
Family-oriented festival featuring blues artists, food and
craft vendors. Chenango County Fairgrounds
.....607-334-5653
www.chenangobluesfest.org

Free Summer Series on Thursdays (July & August)
These shows feature nationally recognized bands
for free in West Side Park- 7 pm.

SEPTEMBER 7th & 8th

Annual Colorscape Chenango
East Park in downtown Norwich
Arts Festival - visual, performing & culinary arts, literary
arts and competitive poetry slam. live music,
demonstrations, Art Zones, dance and student art exhibit.
Free admission. Contact607-336-FEST (3378)
website www.colorscape.org

NOVEMBER

Annual Toy Train Meet. Saturday after Thanksgiving
Norwich 13815 607-336-4166

OTSELIC

HISTORY OF OTSELIC / SOUTH OTSELIC

Formed from the Town of German on March 28, 1817, the Town of Otselec has three main hamlets: Otselec, Beaver Meadow, and South Otselec. Other communities include Otselec Center, Seventh Day Hollow, and Sandersonville. The Otselec River with its contributing streams is the principal body of water in the town. The town has extensive farm and state forest lands, and is noted for over 200 years of fishing that is celebrated each year in its Fishing and Heritage Day, the third Saturday of May. South Otselec is the largest of the hamlets and forms the commercial and social hub of the Town. It is also the home of Gladding Braided Products which has been in operation since 1816.

CHURCHES

SOUTH OTSELIC UNITED METHODIST CHURCH
102 Clarence Church Road, So. Otselec315-653-7728

FIRST BAPTIST CHURCH
130 County Rd. 13, So. Otselec315-653-7875

LOCAL SERVICES

FOUR COUNTY LIBRARY SYSTEM
For more information call607-723-8236

POST OFFICE
1605 St., Hwy. 26,
South Otselec, NY, 13155.....315-653-7822

TOWN CLERK
133 Co. Rd. 13, So. Otselec, NY 13155315-653-7201

NEAREST HOSPITAL

UHS / CHENANGO MEMORIAL HOSPITAL
179 N. Broad St., Norwich 13815
General information607-337-4111

COMMUNITY MEMORIAL HOSPITAL
150 Broad Street, Hamilton, 13346
General information315-824-1100

SCHOOLS

OTSELIC VALLEY CENTRAL SCHOOL DISTRICT
Elementary-Senior High School
125 County Road 13A, PO Box 161
So. Otselec, NY 13155315-653-7218

LOCAL ORGANIZATIONS

AMERICAN LEGION POST #973
167 Valley View Drive, South Otselec, 13155
.....315-653-4481

OTSELIC VALLEY FISHING & HERITAGE ASSOC.
www.ovfish.org315-653-7490

THE SUNSHINE SHOP

Gently used clothing & small appliances
 South Otselic United Methodist Church parsonage
 Clarence Church Rd., South Otselic 13155....**315-653-7728**

SERVICES FOR SENIORS

SENIOR CENTER

Plum Valley Forever Young Center
 United Methodist Church
 102 Clarence Church Rd., South Otselic 13155
**607-337-1770**

ANNUAL EVENTS

ANNUAL OTSELIC VALLEY FISHING & HERITAGE DAY

MAY 18th 9 am - 4 pm
 Wide range of events featuring recreational fishing, art, crafts, music & more!
 A community event. Schedule available at www.ovfish.org
**315-653-7490**

OXFORD

HISTORY OF OXFORD

Oxford was formed from Jericho and Union January 19, 1793 and contains the Chenango River, Mudd Pond, Ruggs Pond, Warn Lake, Brackett Lake and Steeres Pond. Hamlets and villages are Oxford, South Oxford, Summit, Walkers Corners, Robinsons, and Oxford Station, Coventry Station, and Cheshireville. Of interest is the Fort Hill area within the



- Vehicle Repair
- Service
- Towing
- NYS Inspection
- Motorcycle Inspection
- Used cars

Mechanic- Art Riley

MENARDS GARAGE LLC

Daniel & Corrine Menard
 271 Wackford Road, Oxford, NY 13830
Phone: 607-843-9392
 Hours: Monday - Friday 8am - 5pm

OXFORD

Village of Oxford on the east bank of the Chenango. Tradition connects this fort with Indian chief Thick Neck and the family Antoinnes. Oxford, named for Oxford, Mass., was settled in the fall of 1790 by Elijah Blackman.

Because of its position at the intersection of the east-west Catskill-Ithaca turnpike and the north-south Utica to Binghamton route, Oxford became a trading center early on, by stage coach. The Chenango Canal, built in 1837, went from Binghamton to Utica, NY including lock sites. It ran through the center of the village of Oxford and made it was one of the most important ports along the waterway. Oxford had one of two canal collectors between the terminals at Binghamton and Utica. Here Ethan Clarke and his sons maintained a warehouse and a forwarding business where goods brought by the canal boats were sorted until owners came from as far as forty miles away to claim their merchandise. Sherburne, North Norwich, Oxford and Greene, a 97-mile route with 116 locks was, until 1878, used to transport goods until it was unable to compete with the railroads.

In the 1800's the bluestone quarries of Oxford were booming. Oxford was fortunate enough to have many quarries, owned by different companies. But two of them were the most productive quarries in the United States, and they were owned by the F. G. Clarke Blue Stone Company. The "blue-stone belt", which ran along the west bank of the Hudson around Coxsackie, NY, southwest just past PA, seemed to have inexhaustible deposits in Oxford, adding to the prosperity of the village. The success of the mines was partly due to



Faber's
HOME & KITCHENS

116 Warn Pond Rd.
Oxford, NY 13830
(607) 843-9834

CABINETS
• Kitchen • Bathrooms
• Vanities • Wall Units

COUNTERTOPS
• Corian • Quartz • Granite • Laminate

FLOORING • Carpet • Hardwood • Vinyl • LVT

OUTDOOR PRODUCTS
• Fencing • Windows • Decking • Docks

Omega Cabinets
A Division of MasterBrand Cabinets, Inc.

Your Complete BIG/ LITTLE Home Center!



116 Warn Pond Rd.
Oxford, NY 13830
(607) 843-2000

Pellet • Wood • Gas • Coal • Electric Stoves & Fireplaces



- Sales • Service
- Installations • Parts

We also carry bagged coal and pellets!!

For the best in Italian food...



Roma 607-843-6555
 PIZZERIA & RESTAURANT 2 Main St., Oxford
 Open 7 Days A Week

Pizza -Subs -Calzone -Italian Antipasto -Chicken
 Siciliano -Chicken Parmigiana -Veal Livornese -Seafood
 & Fish Specialties -Daily Fresh Bread & Rolls
Plus Many Other Delicious Menu Ideas for Dinner

*Voted one
 of the best
 for pizza,
 prices and
 restaurant!*

**Online Orders at
www.toasttab.com/roma-pizza**

and the best in sports entertainment!



- 12 Big Screen Televisions!
- Direct-TV Sports!
- Happy Hour: Fri. 4 pm to 7 pm
- Thursday: Wings Night, 4 pm to close
- Friday: Dinner Specials 4 pm to close

Serving Lunch and Dinner
Offering a Wide Variety Such As:

- Burgers
 - Sandwiches
 - Salads
 - Appetizers like; Nacho's and Loaded Fries
 - Wraps
 - Wings
 - Chili
- Just to Name a Few*



Kids Menu Available
 Expanded Seating for Your Comfort

1 Main Street, Oxford • 607-843-5255

Sun. noon to close; Monday-Saturday 11am to close

OXFORD

the fact that it was close to transportation. Oxford bluestone was shipped throughout the northeast providing curbing and sidewalks for the cities of Boston, New York, and Philadelphia. Thirty railroad cars of stone were required for the steps of the Capitol building in Albany, which came from Oxford quarries, and Oxford bluestone was used for the construction of Grant's tomb. Times Square and Rockefeller Square in New York City are also graced with Oxford bluestone. The bluestone business slacked off with the invention of Portland cement, and then the stock market crash destroyed any plans for new construction. By the 1930's, it was the end of an era. One of the quarries opened in the mid-1980's, providing bluestone for patios, fireplaces, and garden walkways, but business would never be the same as the century before.

Today, the beauty of bluestone 'sits quietly' as a legacy, especially evident, in the town that made it great.

CHURCHES

- FAITH BIBLE CHURCH**
45 Butler St., Oxford607-843-5068
- ST. JOSEPH'S ROMAN CATHOLIC CHURCH**
3 Scott St., Oxford607-843-7021
- ST. PAUL'S EPISCOPAL CHURCH**
34 Main St., Oxford607-843-7011

OXFORD MOTORS LLC

SALES and SERVICE



PREMIUM QUALITY CARS and TRUCKS (607) 843-9482

At the light in Downtown Oxford
www.oxfordmotorsllc.com

PRE-OWNED VEHICLES

• Complete Mechanical Service • Complete Auto Collision Service

Your One Source For
**DUMP BOXES, PLOWS, LIFT GATES,
PLATFORMS AND TRUCK ACCESSORIES**

Route 12 South, Oxford
607-843-2112
palmerstrucks@gmail.com

bartlespharmacy.com

Bartle's Pharmacy Celebrating 50+ Years in Business (1968-2017)

Your One Stop for Everything from Prescriptions to Collectibles!

FINE GIFTS & COLLECTIBLES

Bartles Pharmacy

CHEVROLET

CHECK US OUT ON FACEBOOK 

Yankee Candles, Willow Tree,
Russell Stover Candies
Blue Mountain Cards and much, much more

"ON THE PARK" • 10 LAFAYETTE PARK, OXFORD
Hours: Mon. thru Fri. 8 am to 8 pm. Sat. 8 am to 6 pm. Sun. 8 am to 1 pm.
PHONE 607-843-2841
WE DOUBLE MANUFACTURER'S COUPONS UP TO \$1.00

OXFORD

NEAREST HOSPITAL

UHS / CHENANGO MEMORIAL HOSPITAL

179 N. Broad St., Norwich 13815
General information607-337-4111

LIBRARY/MUSEUM

OXFORD MEMORIAL LIBRARY

8 Fort Hill Park, Oxford.....607-843-6146
www.oxfordmemoriallibrary.org

LOCAL ORGANIZATIONS

6 ON THE SQUARE, INC.

6 On The Square is an acoustic music listening room in Oxford. As a non profit organization, our mission is to provide music from around the world to the greater Central New York community. Schedule can be found at www.6onthesquare.org
6 Lafayette Park, P.O. Box 1106,
Oxford, NY 13830607-843-OTS6 (6876)

FORT HILL AMERICAN LEGION POST 376

Legion & Auxiliary meet monthly.
17 S. Washington Ave., Oxford, NY 13830....607-843-8166

GRIEFSHARE SUPPORT GROUP

Have you lost a loved one?
Our support group meets Mondays at 2:30 pm.
Call for information.

Faith Bible Church
45 Butler St., Oxford, NY 13830.....607-416-0409

PURPLE HAZE STANDARDBRED

ADOPTION PROGRAM

A Not for Profit 501c3 Standardbred Horse Adoption Program created to retrain and rehome racehorses when they retire from racing. Volunteers always needed, Horses always available. officePHSAP@gmail.com
544 County Rd. 4, Oxford 13830607-843-2299
Cell.....518-669-2715

THEODORE BURR COVERED BRIDGE

RESOURCE CENTER

The Theodore Burr Covered Bridge Resource Center is



Ye OLDE SHANTY 44 S. Canal St.
Rte. 12 South
Oxford, NY
607-843-7111
Mon.-Thur. 10 am - 7 pm
Fri.-Sat. 9 am - 8 pm

Best in Spirits & Wines

10% Senior Citizen Discount
On All In-Stock Wines
(including boxed wines)
LOCAL DELIVERY AVAILABLE

*We are family owned
and operated for
over 60 years.*

We believe that this makes a great difference in the care and service we offer to the families we serve!

For information on pre-arranged funerals and your FREE copy of "Guidelines for Putting My House in Order" booklet, write or phone.

Name: _____

Address: _____

Phone: _____



BEHE FUNERAL HOME INC.
21 Main St., Oxford, NY 13830
Steven E. Behe, Licensed Manager
607-843-6888



**Ready to serve all of your
automotive repair needs**

Routine Maintenance, Diagnostics and More!

- Oil Changes • Tune Ups • Brakes • Tires
- Tire Rotations, Mounting and Balancing

285 Wackford Road, Oxford, NY 13830
607-843-9899
Business Hours:
Mon.-Fri. 8-5, Sat. 8-2, Sun. closed
casnellesauto@gmail.com

UPSTATE TOOL & EQUIPMENT LLC



See Us for All Your Rental Needs!

Welder & Cutting Equipment

Heaters- All Sizes

Forced Air Multi-fuel Heater
175,000 BTU Residential & Commercial



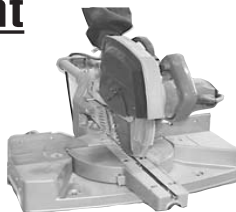
Power Tools

1/2" Hammer Drill 28V
Demo Saw
Power Broom
Air Jack Hammer
Electric Jack Hammer (w/bits)
Paint Sprayer



Power Equipment

Generator
Pressure Washer
10" Tile Saw
2" Sump Pump
Appliance Hand Truck
Post Hole Drill
Walk Behind Brush Hog
Log Splitter
Walk Behind Tiller
Trencher Earth Saw
Floor Sander



**Now Open
At Our New Location
Just Outside Of
Oxford!**

- Skid Steers
- Backhoes
- Attachments
- Dozers
- Excavators
- Rollers
- Loaders
- Lifts
- Telehandler
- Off Road Trucks
- Trailers
- Golf Carts
- Side by Sides



**WE RENT TO
HOMEOWNERS
& CONTRACTORS**

**Rentals by
the Day,
Week or
Month**

285 Wackford Rd., Oxford, NY 13830

607-244-0252

upstatequalityrental@icloud.com

Open Mon.-Fri. 7:30-4:30, Sat. 7:30-noon, Closed Sun.

OXFORD

located in the Oxford Memorial Library in Oxford, NY.
The Center is open whenever the Library is opened.
Please stop by and learn more about
covered bridges across the country.607-674-9656
bobtrish68@twc.com

THRIFT SHOP

The "Common Cents" Thrift Shop. All profits go to the
Oxford Food Pantry.
64 N. Canal St., Oxford 13830607-843-6512

LOCAL SERVICES

CABLE COMPANY

Spectrum1-866-874-2389

GARBAGE COLLECTION

Contracted locally.

POST OFFICE

Oxford Post Office
2 S. Washington Ave., Oxford 13830.....607-843-2851

POWER AUTHORITY

NYSEG1-800-572-1111

TELEPHONE COMPANY

Frontier1-800-921-8101

TOWN CLERK

Town Hall, 20 Lafayette Park, Oxford.....607-843-6222



Your Home Away From Home

The BIDA HOME offers:

- Pleasant atmosphere in a quiet, friendly community.
- Freedom to come and go as you please.
- All your meals.
- All your housekeeping and laundry needs.
- Help in getting to your scheduled appointments.
- Help in taking prescription medicines.

We offer you
the freedom
of being on
your own
with the
comfort of
never being
alone.



Bida Adult Home

WASHINGTON PARK, OXFORD, NY 13830

607-843-6769

CANAL STREET HARDWARE & SUPPLY

ALL YOUR AG NEEDS UNDER ONE ROOF!

If we don't have it and you need it, we'll get it!

CALL US!

For Your Lawn & Garden Needs!

- Fertilizers and Peat Moss
- Garden Tools of All Kinds
- Wild Bird Seed and Suet
 - Garden Seeds
- PLUS SO MUCH MORE!

- Best Pricing Around on Outdoor Drainage Pipes
- Interior & Exterior Paint & Supplies



We carry



KEYSTONE MILLS

Serving Agriculture Since 1911

FEED

3 South Canal Street, Oxford • 607-843-6929

Expanded Hours: M-F: 8 am-5 pm; Sat. & Sun: 9 am-2 pm



Canal Street Hardware and Supply LLC.

OXFORD

VILLAGE CLERK

20 Lafayette Park, Oxford607-843-2512

VOTING REGISTRATION

Chenango County Board of Elections
Chenango County Office Building
5 Court St., Norwich607-337-1760

SCHOOLS

SENIOR HIGH

Oxford Academy and Central School
50 S. Washington Ave., Oxford 13830.....607-843-2025

MIDDLE SCHOOL

Oxford Academy and Central School (grades 5-8)
12 Fort Hill Park, Oxford 13830607-843-2025

ELEMENTARY

Oxford Academy and Central School (UPK-4)
50 S. Washington Ave., Oxford 13830.....607-843-2025

OXFORD HEAD START Hours: Double Sessions

44 N. Washington Ave., Oxford, NY 13830 ..607-843-9990

PHARSALIA

HISTORY OF PHARSALIA

Pharsalia was formed from Norwich April 7, 1806 as Stonington after Stonington, Conn. It was changed to Pharsalia in 1808. Hamlets are East Pharsalia, North Pharsalia, Pharsalia (locally, the Hook) and Pharsalia Springs. An early paper "The Quill and Press", was printed here.

A first settler was Col. John Randall who settled in the western part of Pharsalia in 1797.

LOCAL SERVICES

POST OFFICE Depending on where you live:

- South Plymouth Post Office
3799 State Hwy. 23, S. Plymouth 13844.....607-334-9201
- McDonough Post Office
1600 St. Hwy. 220, McDonough 13801607-647-5453
- Norwich Post Office
20-22 E. Main St., Norwich 13815607-334-4134
- South Otselic Post Office
1605 St. Hwy. 26, S. Otselic 13155.....315-653-7822

POWER AUTHORITY

NYSEG1-800-572-1111

TELEPHONE COMPANY

Frontier1-800-921-8101

SCHOOLS

SENIOR HIGH Depending on where you live:

Norwich High School
89 Midland Dr., Norwich 13815607-334-1600

PHARSALIA

Cincinnati Central School

2809 Cincinnati Rd., Cincinnati 13040.....607-863-3200

Otselic Valley Central School

125 County Rd. 13A, S. Otselic 13155315-653-7218

JUNIOR HIGH Depending on where you live:

Norwich Middle School
89 Midland Dr., Norwich 13815607-334-1600

MIDDLE SCHOOL

Cincinnati Central School
2809 Cincinnati Rd., Cincinnati 13040.....607-863-3200
Otselic Valley Central School
125 County Rd. 13A, S. Otselic 13155315-653-7218

ELEMENTARY Depending on where you live:

Stanford Gibson Primary School
8 Ridgeland Rd., Norwich 13815607-334-1600
Perry Browne Intermediate School
31 Beebe Ave., Norwich 13815607-334-1600
Cincinnati Central School
2809 Cincinnati Rd., Cincinnati 13040.....607-863-3200
Otselic Valley Elementary School
125 Cty. Rd. 13A, S. Otselic 13155315-653-7218

PITCHER

HISTORY OF PITCHER

Pitcher was formed February 13, 1827 from German and Lincklaen and was named for Nathaniel Pitcher, Lt. Governor of New York. It was enlarged in 1833 as part of the Gore Tract. It has the Otselic River. Hamlets are Pitcher, North Pitcher, Chandler's Corners, Pitcher Springs, and Hydeville.

Pitcher was first settled by Ebenezer Fox, Jacob Noteman, Abram Dorn, John Van Augur, and Silas Burgess.

NEAREST HOSPITAL

UHS / CHENANGO MEMORIAL HOSPITAL

179 N. Broad St., Norwich 13815
General information607-337-4111

CORTLAND GUTHRIE MEDICAL CENTER

134 Homer Ave., Cortland 13045
General information607-756-3500

SCHOOLS

SENIOR HIGH Depending on where you live:

Cincinnati Central School
2809 Cincinnati Rd., Cincinnati 13040.....607-863-3200
Otselic Valley Central School
125 County Rd. 13A, S. Otselic 13155315-653-7218

MIDDLE SCHOOL Depending on where you live:

Cincinnati Central School
2809 Cincinnati Rd., Cincinnati 13040 607-863-3200
Otselic Valley Central School
125 County Rd. 13A, S. Otselic 13155315-653-7218

PITCHER

ELEMENTARY Depending on where you live:
 Cincinnatus Central School
 2809 Cincinnatus Rd., Cincinnatus 13040.....**607-863-3200**
 Otselic Valley Elementary Central Schools
 125 Cty. Rd. 13A, S. Otselic 13155
**315-653-7218**

LOCAL SERVICES

GARBAGE COLLECTION - Contracted locally.

POST OFFICE

Pitcher Post Office
 253 Ste. Hwy 26, Pitcher**607-863-3773**

POWER AUTHORITY

NYSEG**1-800-572-1111**

TELEPHONE COMPANY

Frontier**1-800-921-8101**

VOTING REGISTRATION

Chenango County Board of Elections
 Chenango County Office Building
 5 Court St., Norwich 13815**607-337-1760**

PLYMOUTH

HISTORY OF PLYMOUTH

Plymouth was formed from Norwich on April 7, 1806 and contains Plymouth Reservoir and Plymouth Pond. Hamlets are South Plymouth (Frinkville), Plymouth, Steward's Corners, Kirk, Irelands Mills, and at one time, Perrytown.

The Plymouth area was first settled in 1794 by several families including D.G. Jeffrey and John and Modest Raynor.

LOCAL SERVICES

CABLE COMPANY

Spectrum**1-866-874-2389**

GARBAGE COLLECTION - Contracted locally.

POST OFFICE

Plymouth Post Office
 107 County Road 21, Plymouth 13832**607-334-6917**
 So. Plymouth Post Office,
 3799 St. Hwy 23, So. Plymouth 13844**607-334-9201**

POWER AUTHORITY

NYSEG**1-800-572-1111**

TOWN CLERK

Plymouth**607-336-2116**

TELEPHONE COMPANY

Frontier**1-800-921-8101**

VOTING REGISTRATION

Chenango County Board of Elections

PLYMOUTH

County Office Building
 5 Court St., Norwich 13815**607-337-1760**

SCHOOLS

SENIOR HIGH

Norwich High School
 89 Midland Dr., Norwich 13815**607-334-1600**

JUNIOR HIGH

Norwich Middle School
 89 Midland Dr., Norwich 13815**607-334-1600**

ELEMENTARY

Perry Browne Intermediate School
 31 Beebe Ave., Norwich 13815**607-334-1600**
 Stanford Gibson Primary School
 8 Ridgeland Rd., Norwich 13815**607-334-1600**

NEAREST HOSPITAL

UHS / CHENANGO MEMORIAL HOSPITAL

179 N. Broad St., Norwich 13815
 General information**607-337-4111**

POOLVILLE

POOLVILLE

LOCAL SERVICES

CABLE COMPANY

Spectrum**1-866-874-2389**

POWER AUTHORITY

NYSEG**1-800-572-1111**

TOWN CLERK

38 Milford St., Hamilton 13346.....**315-824-3380**

TELEPHONE COMPANY

Frontier (Citizens Communications)**1-800-921-8101**

SCHOOLS

SENIOR HIGH

Sherburne-Earlville Central School (grades 9-12)
 13 School St., Sherburne 13460.....**607-674-7380**

MIDDLE SCHOOL

Sherburne-Earlville Central School (grades 6-8)
 13 School St., Sherburne 13460.....**607-674-7350**

ELEMENTARY

Sherburne Elementary School (grades K-5)
 15 School St., Sherburne 13460.....**607-674-7336**

NEAREST HOSPITAL

COMMUNITY MEMORIAL HOSPITAL

150 Broad St., Hamilton 13346
 General information**315-824-1100**

PRESTON

HISTORY OF PRESTON

Preston was formed from Norwich April 2, 1806 with changes made through 1820. Hamlets are Preston and Preston Center. It contains McCall Pond, Steer Pond, Mill Pond and Tamarack Swamp.

The first settler in the Town of Preston was James Glover of Norwich, Conn. Glover settled in 1787 near Fly Meadow Creek.

NEAREST HOSPITAL

UHS / CHENANGO MEMORIAL HOSPITAL

179 N. Broad St., Norwich 13815
General information607-337-4111

LOCAL SERVICES

GARBAGE COLLECTION

Contracted locally.

POST OFFICE

Depending on where you live:
Norwich Post Office
20-22 E. Main St., Norwich 13815607-334-4134
Oxford Post Office
2 S. Washington Ave., Oxford 13830.....607-843-2851

POWER AUTHORITY

NYSEG1-800-572-1111

TOWN CLERK

Norwich 13815.....607-336-1662

TELEPHONE COMPANY

Frontier1-800-921-8101

SCHOOLS

SENIOR HIGH

Depending on where you live:
Norwich High School
89 Midland Dr., Norwich 13815607-334-1600
Oxford Academy & Central School
50 S. Washington Ave., Oxford 13830.....607-843-2025

JUNIOR HIGH

Depending on where you live:
Norwich Middle School
89 Midland Dr., Norwich 13815607-334-1600
Oxford Academy & Central School
12 Fort Hill Park, Oxford 13830607-843-2025

ELEMENTARY

Depending on where you live:
Perry Browne Intermediate School
31 Beebe Ave., Norwich 13815607-334-1600
Stanford Gibson Primary School
8 Ridgeland Dr., Norwich 13815607-334-1600
Oxford Academy & Central School
50 S. Washington Ave., Oxford 13830.....607-843-2025

SHERBURNE

HISTORY OF SHERBURNE

Sherburne was formed March 5, 1795 from Paris in Oneida County and is watered by the Chenango River. It contained the only pottery in the county, Hart's Pottery. Hamlets and villages are Sherburne, Sherburne Four Corners, Rexford Falls, the "Quarter", and part of Earlville.

The first settlers were Deacon Nathaniel Gray, Elisha Gray, Joel Hatch and James and Newcomb Raymond, all of Kent, Mich.

CHURCHES

FAITH BAPTIST TABERNACLE

10 Utica Rd., Sherburne607-674-4382

FIRST UNITED METHODIST

11 Chapel St., Sherburne607-674-4119

ST. MALACHY'S CHURCH

29 E. State St., Sherburne607-674-9625
www.stmalachysherburne.com

UNITED CHURCH OF CHRIST

St. Rte. 80 & 12 (1 S. Main St.), Sherburne ..607-674-9300

NEAREST HOSPITAL

UHS / CHENANGO MEMORIAL HOSPITAL

179 N. Broad St., Norwich 13815
General information607-337-4111

COMMUNITY MEMORIAL HOSPITAL

150 Broad St., Hamilton 13346
General information315-824-1100

LIBRARY/MUSEUM

SHERBURNE PUBLIC LIBRARY

2 E. State St., Sherburne607-674-4242

SHERBURNE HISTORIC PARK SOCIETY AND MUSEUM

11 School St., Sherburne607-674-6312
sherburnehistorian@frontiernet.net

LOCAL ORGANIZATIONS

AMERICAN LEGION POST #876

All meetings at the Post.
15 S. Main St., Sherburne, NY 13460607-674-9201

FRIENDS OF ROGERS ENVIRONMENTAL EDUCATION CENTER

2721 State Hwy 80, Sherburne, NY 13460
Information:607-674-4733
www.friendsofrogers.org

SHASTA-

SHERBURNE AREA SNOW TRAVELERS ASSOCIATION

Sherburne Area Snow Travelers Association promotes snow-mobiling, safety, trail grooming and maintenance of local trails.....607-674-2582
facebook.com/Shasta-Snowmobile-Club



Steel Sales Inc.

P.O. Box 539, 8085 State Hwy. 12
Sherburne, NY 13460

Open To The Public



Your Source for Steel, Stainless, Aluminum & More

Structural
Shapes & Bars



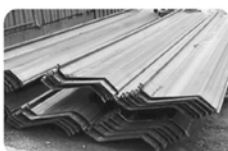
Sheet & Plate
Products



Concrete Reinforcing
Products



Piles
Decks & Grates



Additional Building
Materials



Tube
& Piping



Drainage
Products



Snow Plow & Heavy
Equipment Wear Parts



Custom Fabrication

350 Ton Press
Brake



High Definition
Plasma Table



OMAX
Water Jet



Monarch Vertical
Milling Machine



Plate Roller



Cincinnati
Hydraulic Shear



800-238-7833 or 607-674-6363

Fax: 607-674-9706

www.SteelSalesInc.com

Metal Roofing & Siding

SHERBURNE

SHERBURNE FIRE DEPARTMENT

15 West State St., Sherburne, NY 13460607-674-2204

SCHOOLS

SENIOR HIGH

Sherburne-Earlville Central School (grades 9-12)
13 School St., Sherburne 13460.....607-674-7380

MIDDLE SCHOOL

Sherburne-Earlville Central School (grades 6-8)
13 School St., Sherburne 13460.....607-674-7350

ELEMENTARY

Sherburne Elementary (grades K-5)
15 School St., Sherburne607-674-7336

SHERBURNE COOPERATIVE NURSERY SCHOOL

2 Summit St., Sherburne, NY 13460607-674-2558

LOCAL SERVICES

CABLE COMPANY

Spectrum1-866-874-2389

GARBAGE COLLECTION

Contracted locally.

POST OFFICE

Sherburne Post Office
4 W. State St., Sherburne, 13460607-674-2761

TOWN CLERK

1 Canal St., Sherburne607-674-4481

VILLAGE CLERK

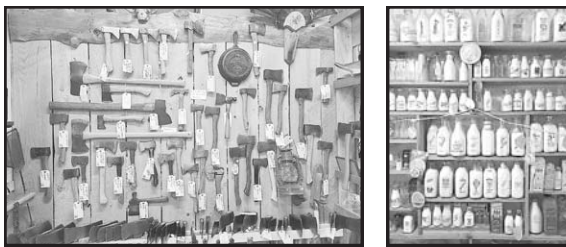
15 W. State St., Sherburne607-674-2300

SERVICES FOR SENIOR CITIZENS

THE WELCOME CENTER

Senior Centers provide a variety of activities, programs and a nutritious meal. Reservations needed.
Grace Manor Center
12 Knapp Street, Sherburne 13460607-674-4600

See The Man, LLC Antiques & Collectibles



Cut Out or Mention this Ad to Receive

20% OFF Your Total Purchase!

We Buy, Sell & Trade
607-316-8463

Joe Dushko: Owner

seethemanantiques.com

contact@seethemanantiques.com

54 N. Main Street, Sherburne, NY

Open: Wed. - Sat. 10-5; Sun. 12:30-5; or by appt.

IF YOU USE PROPANE...

WE CAN SAVE YOU MONEY!

NOW IS THE TIME TO SWITCH!

To see our current price or to become an Earlville Buyers Group member, visit us at www.earlvillebuyersgrp.com

SHERBURNE SPORTS

PARTS & ACCESSORIES

ATV, Motorcycle (Dirt & Street)

HEADQUARTERS

We have you covered

• Jackets • Helmets • Gloves
• Plugs • Oil (including Amsoil®) • Parts & Accessories



ATV
Tire Special

25x8x12 or 25x10x12. Four Tires
Only \$349

Burt Matott, Jr.

Phone / Fax: 607-674-9281

84 North Main Street,
Sherburne, NY 13460

M-F 10-5; Sat. 10-2; Sun. 9-1 (Dec.-March)

Email:

sherburnesports@frontiernet.net

SMITHVILLE

HISTORY OF SMITHVILLE

Smithville was formed from Greene April 1, 1808 and was named for Elisha Smith, first agent for the tract. Hamlets are Smithville Flats, once Big Flats, (East Smithville), Tyner, Smithville Center, Landers and Lakeville. It contains Round Pond and Long Pond.

Smithville's first settlement was in 1797 in the Geneganslet Valley.

CHURCHES

FIRST SMITHVILLE PRESBYTERIAN CHURCH

5279 St. Hwy. 41, Smithville.....607-656-8901

NEAREST HOSPITAL

UHS / CHENANGO MEMORIAL HOSPITAL

179 N. Broad St., Norwich 13815
General information607-337-4111

LOCAL SERVICES

CABLE COMPANY

Spectrum1-866-874-2389

POST OFFICE

Smithville Flats Post Office
5299 St. Hwy. 41, 13841607-656-4968

POWER AUTHORITY

NYSEG1-800-572-1111

TELEPHONE COMPANY

Frontier1-800-921-8101

TOWN CLERK

.....607-656-7969

VOTING REGISTRATION

Chenango County Board of Elections
Chenango County Office Building
5 Court St., Norwich 13815607-337-1760

SCHOOLS

Depending On Your Address

GREENE CENTRAL SCHOOL

Greene 13778607-656-4161

OXFORD ACADEMY AND CENTRAL SCHOOL

Oxford 13830607-843-2025

SMYRNA

HISTORY OF SMYRNA

Smyrna was formed as Stafford March 25, 1808 from Sherburne. The town's name was changed to Smyrna two weeks later. It is watered by Pleasant Brook. In the 8th township, hamlets and villages are Smyrna, Upperville, Bonney, Wilburs, Rexford Hills, and "the Flat Iron".

Smyrna was first settled by Joseph Porter of Conway, Mass. in August, 1792 one-half mile south of the present village.

The Wolf Mountain Nature Center



Non-profit, outdoor nature center with focus on advocacy & protection of the wolf.

OPEN FEBRUARY - DECEMBER
Sundays 12:00-4:00 pm

Check our website for extended summer hours and special programs.

Currently home to Gray Wolves, Eastern Coyotes, Gray Foxes & Arctic Foxes.

Tours/information provided by educated volunteers. View animals, explore classroom, shop in gift shop cabin, nature trails, enjoy picnic area, ongoing programs and presentations.



Admission: \$8.00 (5 & under FREE)

100% of admission goes towards the care and feeding of our animals.

562 Hopkins Crandall Rd.

Smyrna, NY • 607-627-6784

www.TheWolfMountainNatureCenter.org



only
15 minutes
from
Norwich!

SMYRNA

CHURCHES

SMYRNA BAPTIST CHURCH

22 East Main St., Smyrna607-627-6717

NEAREST HOSPITAL

UHS / CHENANGO MEMORIAL HOSPITAL

179 N. Broad St., Norwich 13815
General information607-337-4111

COMMUNITY MEMORIAL HOSPITAL

150 Broad St., Hamilton 13346
General information315-824-1100

LOCAL ORGANIZATIONS

CORNELL COOPERATIVE EXTENSION

Education Center
99 N. Broad St., Norwich 13815607-334-5841

HOSPICE & PALLIATIVE CARE OF CHENANGO COUNTY

33-39 Court St., Norwich607-334-3556

THE WOLF MOUNTAIN NATURE CENTER

562 Hopkins Crandall Road, Smyrna, NY 13464
.....607-627-6784
www.thewolfmountainnaturecenter.org

SCHOOLS

SENIOR HIGH

Sherburne-Earlville Central School (grades 9-12)
13 School St., Sherburne 13460.....607-674-7380

MIDDLE SCHOOL

Sherburne-Earlville Central School (grades 6-8)
13 School St., Sherburne, NY 13460.....607-674-7350

ELEMENTARY

Sherburne Elementary School (grades K-5)
15 School St., Sherburne 13460.....607-674-7336

LOCAL SERVICES

CABLE COMPANY

Spectrum1-866-874-2389

GARBAGE COLLECTION - Contracted locally.

LICENSES

Town Clerk
1893 State Hwy. 80, Smyrna, 13464607-627-6269

POST OFFICE

Smyrna Post Office
9 W. Main St., Smyrna, 13464.....607-627-6200

POWER AUTHORITY

NYSEG1-800-572-1111

TOWN CLERK

1893 State Hwy. 80, Smyrna607-627-6269

TELEPHONE COMPANY

Frontier1-800-921-8101

VOTING REGISTRATION

Chenango County Board of Elections
County Office Building
5 Court St., Norwich 13815607-337-1760

SOUTH NEW BERLIN

SOUTH NEW BERLIN

CHURCHES

FIRST BAPTIST CHURCH

3294 Rte. 8, South New Berlin607-859-2240

HOLMESVILLE BAPTIST CHURCH

3024 St. Hwy. 8, South New Berlin.....607-859-2200

NEAREST HOSPITAL

UHS / CHENANGO MEMORIAL HOSPITAL

179 N. Broad St., Norwich 13815
General information607-337-4111

A.O. FOX MEMORIAL HOSPITAL

1 Norton Ave., Oneonta 13820
General information607-432-2000

LIBRARY/MUSEUM

SOUTH NEW BERLIN FREE LIBRARY

3320 State Highway 8
South New Berlin, NY 13843607-859-2420

LOCAL SERVICES

CABLE COMPANY

Spectrum1-866-874-2389

GARBAGE COLLECTION

Contracted locally.

POST OFFICE

South New Berlin Post Office
6338 St. Hwy. 23, South New Berlin, 13843
.....607-859-2558

POWER AUTHORITY

NYSEG1-800-572-1111

TOWN CLERK

New Berlin 13411607-847-8909

TELEPHONE COMPANY

Frontier1-800-921-8101

VOTING REGISTRATION (forms only)

Chenango County Board of Elections
Chenango County Office Building
5 Court St., Norwich607-337-1760

SURROUNDING AREA



HOLY FAMILY SCHOOL

*Celebrating over 100 years of
Catholic Education in
Chenango County*



Holy Family School

A Middle States Accredited School
17 Prospect St., Norwich, NY 13815
607-337-2207 • www.hfsnorwich.com

- MERIT-

A place where morals and academic
excellence go hand in hand

- PRIDE-

A place with a tradition of excellence

- PEACE -

A place where your child is safe,
secure and happy to be here

- HONOR -

A place where Christian principles
are a way of life

- FAMILY -

A place where family support is encouraged

ski-doo

**Proud ski-doo
Dealer 50+ Years!**

**Great
Rebates
Available!**

See dealer
for details

PRESTON SNOWMOBILE, LLC.

www.prestonsnowmobile.com

607-336-2815

241 Murphy Rd, Oxford NY 13830

SURROUNDING AREA

FIRE SAFE

Be Aware & Prepared.



2 Minutes
The time it takes for a fire to become life-threatening

5 Minutes
The time it takes for a residence to become engulfed in flames

Ready.gov U.S. Department of Homeland Security



371,500 Residential Fires Annually

2,695 Residential Fire Deaths Annually

10,825 Residential Fire Injuries Annually

U.S. Fire Administration 2017 Data



600° The temperature a room on fire can reach at eye level

Ready.gov U.S. Department of Homeland Security

"Protect Yourself At All Times"

Advanced Fire Protection

Sales & Service of Ansul System & Fire Extinguishers
6142 Co. Rd. 32, Norwich, NY 13815
(607) 334-3373 • Cell: (607) 226-4694 • Fax: (607) 336-4823
afpnor@roadrunner.com

Prepare & Protect

1. Install smoke alarms on every level of your home, as well as inside and outside of every sleeping area.
2. Create and practice a fire escape plan.
3. Sleep with your door closed.
4. Go to ready.gov/home-fires or visit nfa.org for detailed fire prevention tips and fire escape plan guidelines!

Take time during Fire Prevention Week, October 6-12, to check smoke alarms, review safety tips and create a fire escape plan for your home.



TOP 5 Residential Fire CAUSES

- Cooking 191,800 Fires
 - Heating 33,800 Fires
 - Carelessness 26,400 Fires
 - Electrical Malfunction 24,100 Fires
 - Open Flame 16,000 Fires
- U.S. Fire Administration 2017 Data

FREE ESTIMATES

GENERAL AND PEDIATRIC DENTISTRY

Hazem Elbially, D.M.D. General Dentist • Solomia Zhounirovych, D.D.S. General Dentist
Eric Davis, D.M.D. General Dentist • Carl Fusco, D.D.S. Board Certified Pediatric Dentist
Dr. Cheryl Sorbero, D.D.S. Orthodontist

invisalign® *Special*
The Clear Alternative to Braces

\$3,199

Limited time only. Financing available.

Extraction Special **\$129**

Limited time only. Call for details. * Self pay patients only

Accepting new patients ~ Accepting most insurances

Comprehensive Dental Care

- Regular check-ups and cleanings
- Digital x-rays
- Ceramic crowns and bridges
- Tooth-colored fillings
- Root canals
- Extractions
- Implants
- Dentures
- Invisalign
- Nitrous Oxide (laughing gas)
- Oral Conscious Sedation (children only)
- Same day emergency visit

Schoharie Dental, PLLC

229 Main Street, PO Box 129 • Schoharie, NY 12157
www.schohariedentalny.com • Email: schohariedmd@gmail.com

Phone: (518) 702-4145 Fax: (518) 702-4195

Open: Mon.-Fri. 9 am-5 pm

518-702-4145

SURROUNDING AREA

Scenic Country Setting for Your Golfing Pleasure

MEADOW LINKS



**Golf Course
& DRIVING RANGE**

"Quality, Affordable Golf"

18 Hole Executive Length Golf Course

Open Daily Dawn 'Till Dusk
on Allen's Lake Rd., between Rte. 20,
Richfield Springs & Rte. 80 Otsego Lake

- Jr. Golfers & Beginners Welcome
- Twilight & Senior Specials
- Riding Carts & Club Rentals
- Pavilion for Private Parties
- Lessons Available

Phone (315) 858-1646
www.meadowlinks.com



- Auctioneers
- Licensed Real Estate Brokers

607-692-4540 -or- 1-800-MANASSE

12 Henry St. (Rte. 26 S), P.O. Box 738

Whitney Point, NY 13862 • Fax: 607-692-4327

Email: ManasseAuctions@aol.com

Visit Us At Our Website: www.manasseauctions.com

Going Once...
Going Twice...
SOLD!



Check out the
Pennysaver for all
the latest auctions!

PENNYSAVER
www.pennysaveronline.com

Gardening Made Easy

with a
**Walk-Behind Tiller from
BCS America**

Explore the features
of BCS two wheel
tractors.



**ONE TRACTOR,
MANY USES**

Features: •All Gear Drive •Automotive
Style Clutch • Independent Power Takeoff
•Reversible Handlebars •Professional
Quality Engines •Adjustable Handlebars
•And Much More!



REAR-TINE TILLER



CHIPPER/SHREDDER



BRUSH MOWER

Many Other
Attachments Available

Check Out Our Lowest
Spring Inventory Sale
in March, April & May
for In-Stock Items!

Visit www.bsamerica.com for more info

WE SERVICE WHAT WE SELL!
Stop in today!

— Pristine Acres —

GARDEN CENTER

793 CO HWY 1, LAURENS, NY 13796

607.263.2158

SURROUNDING AREA



STAGE'S

AUTOMOTIVE SERVICES, LLC

- Brake Service • Tune Ups
- Transmission Service
- Lube, Oil, Filter • Muffler Work
- Servicing All Brands, Foreign & Domestic
- NYS Inspections • Tires

94 North Main Street, New Berlin

www.randysautomotive@frontiernet.net **607-847-6911**

Randy & Nick Stage, Owners Open Weekdays 8 am to 5 pm

**HONEST, LOCAL,
RELIABLE SERVICE**

CLIP & SAVE



AUTOMOTIVE SERVICES, LLC

STAGE'S AUTO SPECIAL

ONLY \$34⁹⁵

Lube/Oil*/Filter

*Offer good up to
5 quarts of oil. Tax excluded.*

*Does not include synthetic oil



**Be A Smart Shopper...
Compare Prices**

**Parking In The Rear Of The Store
Rainchecks Always Available
Senior Citizens Prescription Discount**

38 S. BROAD STREET, NORWICH, NY • 607-334-2431
HOURS: Mon.-Fri. 9-6; Sat. 9-3; Sun. 9-1

6 N. MAIN ST., SHERBURNE, NY • 607-674-9691
HOURS: Mon.-Fri. 9-6; Sat. 9-3; Sun. 9-1

12 MAIN ST., NEW BERLIN, NY • 607-847-8100
HOURS: Mon.-Fri. 9-6; Sat. 9-3; Sun. 9-1

Like us on
Facebook





SPRINGBROOK

Inspire & Support Growth

**SPRINGBROOK.NY.ORG/APPLY
OR TEXT "JOBS" TO 607-607-1927**

Springbrook provides services for people with disabilities throughout New York State.

\$1,500
Sign-On Bonus

\$17-\$22
Hourly Wage*

\$1,000
Refer a Friend





LOPI® ENDEAVOR WOOD STOVE



FIREPLACE
XTRORDINAIR

FIREPLACE XTRORDINAIR® 864 TRV 40K GAS FIREPLACE

No Power? No Problem!

Don't be left out in the cold this winter. A Fireplace Xtrordinair® or Lopi® hearth appliance can provide your family with warmth & comfort even when the power goes out! P.S. - You can even use your Lopi to cook on! Now is the perfect time to invest in a beautiful Fireplace Xtrordinair® or Lopi® gas or wood heater. Come see our vast selection of fireplaces, inserts and stoves that can add the ambiance of fire to any home. Talk to us about your creative vision of fire and let us help you ignite the fire within.



116 Warn Pond Rd.
Rte. 12 South,
Oxford
607-843-2000

Hours: Mon., Tues., Wed., & Fri. 10 am-5 pm
Thurs. 10 am-6 pm; Saturday 9 am-1 pm

www.countrysideoxford.com

SURROUNDING AREA



- Memorial Design & Pre-Planning Services
- Gravestone Lettering
- Headstone Cleaning & Re-Leveling
- Custom Brass & Aluminum Plaques For All Occasions

COMPASSIONATE SERVICE & HONORING A LIFE REMEMBERED

6106 County Road 32, Norwich, NY • www.savurnmemorials.com
607-316-4129 • Open Weekdays and By Appointment on Weekends

Menu Coupons Classifieds Search Login



Go Local!

HOME CLASSIFIED ADS DISPLAY ADS COUPONS ONLINE EDITIONS BUSINESS DIRECTORY SUBMIT AN AD LOGIN / REGISTER

FEBRUARY 2021 ONLINE EDITIONS



www.pennysaveronline.com
 ALL 7 EDITIONS...SPECIAL SECTIONS...
 PLUS A TON OF CLASSIFIEDS ONLINE!

This Week's Classifieds

	Automotive		Child Care
	Community		Employment

PROFESSIONAL LISTINGS

ADULT HOMES

OXFORD

Bida Adult Home

The freedom of being on your own with the comfort of never being alone.
Washington Park, Oxford607-843-6769
See display ad

ADVERTISING

AFTON

6zero7 Advertising Concepts

Contact Melissa Matthews.
Email: 6zero7merchants@gmail.com
Phone or Text:607-242-8473
See display ad

ANIMAL FEED STORE

NEW BERLIN

Homestead Pet & Farm Supply

3 Railroad St., New Berlin, NY607-847-6173
See display ad

ANTIQUES

EARLVILLE

Black Cat Antiques & Gifts

Like us on Facebook!
14 E. Main St., Earlville, NY315-691-5721
See display ad

SHERBURNE

See The Man, LLC Antiques & Collectibles

We Buy, Sell & Trade. See display ad for 20% off coupon!
seethemanantiques.com
54 North Main, Sherburne, NY607-316-8463
See display ad

AUCTIONS

WHITNEY POINT

Manasse Auctioneers

Auctioneers and Licensed Real Estate Brokers.
Visit our website:www.manasseauctions.com
See display ad

AUTOMOTIVE

NEW BERLIN

Stage's Automotive Services

Honest, local & reliable service
94 North Main St., New Berlin, NY607-847-6911
See display ad

OXFORD

Casnelle's Auto LLC

Your complete automotive repair shop
285 Wackford Rd., Oxford, NY607-843-9899
See display ad

Menard's Garage

Auto service & repair. Flatbed towing.
NYS Inspections. Motorcycle Inspections. Used Cars
271 Wackford Rd., Oxford, NY607-843-9392
See display ad

Oxford Motors LLC

Complete mechanical and auto collision service. Late model used vehicles
Rte. 12 (at the light), Oxford, NY607-843-9482
See display ad

BOTTLE & CAN RECYCLING

NORWICH

Riverside Redemption Center

No limit on orders. Please remember to
separate glass from plastic and cans.
5012 State Hwy. 12, Norwich, NY607-316-0408
See display ad

CARPET & FLOORING

BINGHAMTON

National Floor Center

Carpet, hardwood, tile & vinyl. www.nationalfloorcenter.com
46 South Washington St., Binghamton, NY607-296-4302
See display ad

CONSTRUCTION

EARLVILLE

Citiscap Construction LLC

5974 S. Lebanon Rd., Earlville, NY315-691-4900
See display ad

Riolo & Son Construction

Earlville, NY607-745-7914
See display ad

DENTIST

SCHOHARIE

Schoharie Dental, PLLC

General dentistry for the entire family. We accept most insurances.
229 Main St., PO Box 129, Schoharie, NY518-702-4145
See display ad

DISABILITY SERVICES

ONEONTA

SpringbRook

springbrook.org
Oneonta, NY607-286-7171
See display ad

FAIR

NORWICH

Chenango County Fair

August 7th-11th, 2024. Mark your calendars!607-334-9198
See display ad

FIRE PROTECTION

NORWICH

Advanced Fire Protection

email: afpnr@roadrunner.com
6142 Co. Rd. 32, Norwich, NY607-334-3373
.....Fax: 607-336-4823
See display ad

FUNERAL HOMES

NORWICH

R.J. Fahy Funeral Home

A tradition of service since 1939. www.fahyfuneralhome.com
116 North Broad St., Norwich607-334-8833
See display ad

Wilson Funeral Home

Locally owned & operated.
68 South Broad St., Norwich607-336-3993
See display ad

OXFORD

Behe Funeral Home, Inc.

Locally owned and operated for over 50 years.
21 Main Street, Oxford607-843-6888
See display ad

GARDEN CENTER

LAURENS

Pristine Acres

Visit www.bcsamerica.com to see our two-wheel tractors and
walk behind tillers that we sell.
793 Co. Hwy. 10, Laurens, NY607-263-2158
See display ad

GIFTS

EARLVILLE

Black Cat Antiques & Gifts

We are a primitive and country mix store.

14 E. Main St., Earlville, NY315-691-5721
See display ad.

NORWICH

Made In Chenango Gift Shop & Gallery
25-27 North Broad St., Norwich, NY607-334-3355
See display ad.

GOLF

RICHFIELD SPRINGS
Meadow Links Golf Course
Allen's Lake Rd., between Rte. 20 Richfield Springs
and Rte. 80, Otsego Lake, NY315-858-1646
See display ad.

HARDWARE, GARDEN & AG CENTER

OXFORD
Canal Street Hardware & Supply
Your perfect country hometown hardware store. Everything from farm
needs to that unique plumbing part. Open 7 days a week at 7 am.
3 South Canal St., Oxford, NY607-843-6929
See display ad.

HOME HEATING & COOLING

NORWICH
Reese Marshall
We carry a full line of quality fuels including B-10 heating oil,
diesel, gasoline & propane gas. Burner Service Department.
Budget & Burner Service Plans. Free estimates on all installations
6254 County Rd. 32, Norwich, NY607-334-3633
See display ad.

OXFORD

Countryside Stove & Chimney
Pellet, wood, gas, coal and electric stoves & fireplaces and all accessories.
116 Warn Pond Rd., Oxford, NY607-843-2000
See display ad.

HOME IMPROVEMENT

OXFORD
Faber's Home & Kitchens
Everything from kitchens to docks.
116 Warn Pond Rd., NY607-843-9834
See display ad.

INSURANCE

NORWICH
Eileen Hoffman Insurance
eileen_hoffman@yahoo.com
www.medicarevalue.com/EileenHoffman
Norwich, NY607-316-0255
See display ad.

JEWELRY

NORWICH
McNeil's Jewelers
Your hometown jeweler. Like us on Facebook
www.mcneiljewelers.com
25 South Broad St., Norwich, NY607-334-2617
See display ad.

LIQUOR STORES

OXFORD
Ye Olde Shanty
Fine wines & liquors. Bigger and better selection than ever!
44 South Canal St., Oxford, NY607-843-7111
See display ad.

MEAT PROCESSOR

NEW BERLIN
Farmers Place
www.joesfarmersplace.net
256 County Hwy. 20, New Berlin, NY607-847-8234
See display ad.

MEDICAL CENTER

NORWICH
UHS Chenango Memorial Hospital
New Emergency Department & Walk-In Center Now Open!
179 North Broad St., Norwich, NY607-337-4111
See display ad.

ONEONTA

A.O. Fox Hospital
1 Norton Ave., Oneonta, NY607-432-2000
See display ad.

MEMORIAL HEADSTONES

NORWICH
Savurn Memorials
Compassionate Service and Honoring a Life Remembered
www.savurnmemorials.com
6106 County Rd. 32, Norwich, NY607-316-4129
See display ad.

MONUMENTS

NORWICH
Norwich Monuments LLC
Monuments, Mausoleums, Stone Lettering and Cleaning
www.norwichmonuments.com
6395 State Hwy. 12, Norwich, NY607-334-3944
See display ad.

MOTORSPORTS

SHERBURNE
Sherburne Sports
Your ATV, Motorcycle (Dirt & Street) Headquarters
Visit: sherburnesportsny.com
84 North Main St., Sherburne, NY607-674-9281
See display ad.

NATURE CENTER

SMYRNA
Wolf Mountain Nature Center
www.TheWolfMountainNatureCenter.org
562 Hopkins Crandall Rd., Smyrna, NY607-627-6784
See display ad.

OUTDOOR POWER EQUIPMENT

NORWICH
Norwich Outdoor Power Equipment
Full line of Mahindra Tractors & Utility Vehicles. Toro, Landmaster Utility
Vehicles, Ferris Zero Turn Mowers.
www.norwichope.com
5876 Cty. Rd. 32 (East River Rd.), Norwich, NY607-334-4378
See display ad.

OUTDOOR RECREATION SPORTING GOODS

NORWICH
Mayhood's Sporting Goods
Biggest and best selection of Hunting & Fishing needs
in the Central NY area!
Rte. 12 South, Norwich, NY607-334-2001
See display ad.

PAVING

NORWICH
Yacano's Paving
Residential * Commercial * Driveways • Parking Lots, New Work,
Repairs, Sealing
Route 12 South, Norwich, NY607-336-1400
See display ad.

PHARMACY

NORWICH
Service Pharmacy
We have 3 locations: Norwich, Sherburne & New Berlin
38 South Broad St., Norwich, NY607-334-2431
See display ad.

OXFORD

Bartles Pharmacy

Your one stop for everything from prescriptions to collectibles. Yankee Candles, Fenton Glass (showcase dealer), Willow Tree, Russell Stover Candies, Blue Mountain Cards and much, much more. 10 Lafayette Park, Oxford, NY607-843-2841
See display ad.

PLUMBING, HEATING & AIR CONDITIONING

NORWICH

Avolio Brothers, LLC

Plumbing- Heating- Air Conditioning- Commercial- Residential- Industrial Custom Duct Fabrication. 6053 Co. Rd. 32, Norwich, NY607-336-5572
See display ad.

PROPANE

SHERBURNE

Earlville Buyers Group

To see our current price or to become a member, visit us at www.earlvillebuyersgrp.com Sherburne, NY 888-557-6053
See display ad.

REAL ESTATE

ANDES

Howard Hanna- Andes

Visit howardhanna.com 221 Main St., Andes, NY845-676-3600
See display ad.

NORWICH

Howard Hanna-Norwich

Looking for that perfect home? Visit www.howardhanna.com 6095 St. Hwy. 12, Norwich, NY 607-336-8080
See display ad.

ONEONTA

Howard Hanna- Oneonta

Visit howardhanna.com 75 Market St., Oneonta, NY607-433-1020
See display ad.

SIDNEY

Howard Hanna- Sidney Office

Looking for that perfect home? Visit howardhanna.com 39 Main St., Sidney, NY607-563-1020
See display ad.

RECYCLING

NORWICH

Chenango County Dept. of Public Works

Recyclables and waste management. Facilities in North Norwich, Brisben and Pharsalia.....607-337-1792
See display ad.

RESTAURANTS

NORWICH

Nina's Pizzeria & Restaurant

A TASTE OF ITALY... But in America. www.ninaspizzeria.biz 32 South Broad St., Norwich, NY607-334-6278
See display ad.

Subway

subway.com/catering 5636 Rte. 12 South, Norwich, NY607-336-6450
See display ad.

OXFORD

Roma Pizzeria & Restaurant

Dine In or Take Out Open 7 days a week. 2 Main St., Oxford, NY607-843-6555
See display ad.

SCHOOL

NORWICH

Holy Family School

www.hfsnorwich.com 17 Prospect St., Norwich, NY607-337-2207
See display ad.

SKI-DOO SNOWMOBILES

OXFORD

Preston Snowmobile LLC

Proud ski-doo dealer for 50+ years. www.prestonssnowmobile.com 241 Murphy Rd, Oxford, NY607-336-2815
See display ad.

SPORTS BAR & GRILL

OXFORD

The Stadium Sports Bar & Grill

The best in sports entertainment. 1 Main St., Oxford, NY607-843-5255
See display ad.

STEEL

SHERBURNE

Steel Sales

Your source for Steel, Stainless, Aluminum & More. www.steelsalesinc.com 8085 State Hwy. 12, Sherburne, NY607-674-6363
See display ad.

STOVES & FIREPLACES

OXFORD

Countryside Stove & Chimney

Pellet, wood, gas, coal and electric stoves & fireplaces and all accessories. 116 Warn Pond Rd., Oxford, NY607-843-2000
See display ad.

TENTS AND RENTALS

NORTH NORWICH

Tyrrell's Tents & Rentals

Party tents, tables, chairs, coolers. will.tyrrell@yahoo.com North Norwich, NY607-316-2337
See display ad.

THRIFT SHOP

NORWICH

Annie's Thrift Shop

Something for everyone. From forks to furniture. Family friendly prices. 5311 NY 12 (2 miles south of Norwich) Norwich, NY607-244-3771
See display ad.

TOOL/ EQUIPMENT RENTAL

OXFORD

Upstate Tool & Equipment LLC

285 Wackford Rd., Oxford, NY607-244-0252
See display ad.

TRUCK BODIES & SNOWPLOWS

OXFORD

Palmer's Truck & Accessories

Truck bodies and snowplows. palmerstrucks@gmail.com Route 12 South, Oxford, NY607-843-2112
See display ad.

VISION

NORWICH

Chenango Vision Center, Inc.

Quality family eye care at affordable prices. Eye exams. Corner of East Main St. & East River Rd., Norwich, NY607-336-2020
See display ad.

**FREE
DELIVERY
to Chenango
& Delaware
Counties**



CELEBRATING OUR 11TH YEAR IN BUSINESS!



Upstate New York's best selection of tile, hardwood, carpet and vinyl at the area's lowest prices.

**Step Up To
National Floor Center...**

National **FLOOR CENTER**

National Floor Center Main Showroom
46 South Washington St., Binghamton, NY 13905

607-296-4302 / 607-772-1212

Open Mon-Fri 9 am-7 pm, Sat 9 am-5 pm

www.nationalfloorcenter.com

Welcome To Nina's!

PIZZERIA & RESTAURANT

For The Best In Italian Food

- Pizza • Subs • Calzones
- Pepperoni Rolls
- Antipastos • Specialty Pizza
- Beer & Wine

Dinners

Choose from the Best Selection of Italian Dinners, cooked the old-fashioned way.



Proud to be part of Norwich since 1975



Italian & American Lunch
And Dinner Specials Daily

A Taste of Italy... But in America

PIZZERIA & RESTAURANT

32 South Broad St., Norwich

607-334-6278

Open 7 Days a Week

www.ninaspizzeria.biz

COUPON

\$1⁰⁰ OFF
Any Purchase

Original coupons only. No copies accepted. One coupon per customer. Minimum purchase of \$10.00. Expires 12/31/24.



PIZZERIA & RESTAURANT

32 South Broad St., Norwich

Our Customers Are Our First Priority



Office Staff: Tom Kelly, Justine Tumilowicz, Sarah Newell, Mike Edwards



Clyde Treacy & James MacDuff

Our Pledge...

Our Customers are our first priority. Reese Marshall is here to serve you with your heating and cooling needs. We Pledge to constantly reaffirm this with our actions, which we have built our reputation on.

We Offer...

- Free estimates for all installations
- Automatic delivery with a guarantee
- 24-hour emergency service, 365 days a year
- A variety of budget and burner service plans
- People who care about providing quality service

Our Area of Service...

Reese-Marshall Co. Inc.'s office and storage facility is located on County Road 32, in Norwich. Our service area extends to Norwich and the following areas:

- Oxford - McDonough - Guilford - Preston
- Mt. Upton - Gilbertsville - Morris
- South New Berlin - New Berlin - Edmeston
- South Edmeston - West Edmeston - Pittsfield
- Sherburne - North Norwich - Earlville - Columbus Smyrna
- Otselic - South Otselic - Pitcher - Plymouth
- Sidney - Bainbridge
- Hamilton - Madison - Morrisville - Brookfield

Quality Products...

Reese-Marshall Co. Inc. carries a full line of quality fuels including B-10 Heating Oil, Diesel, Gasoline and Propane Gas.

Our Burner Service Department is fully equipped to handle any repair or installation.



Safe Quality Heating Systems

Thermo Pride **Buderus** **Rinnai**

Thinking of a new heating system?
Don't hesitate to call for a free written estimate.



REESE-MARSHALL

We make warm friends and keep you cool.
since 1942

6254 County Road 32, Norwich, NY 13815

PHONE (607) 334-3633

www.reesemarshall.com • email: info@reesemarshall.com

Our New Emergency Department & Walk-In Center Are Open!

UHS Chenango Memorial Hospital's new Emergency Department and Walk-In Center are now open! This new state-of-the-art facility is conveniently located in Norwich, New York, and ready when you need medical care. However, before you rush in... here is a Quick Reference Guide to help you decide the best place to seek care. If you are uncertain where to go, please contact your provider. And remember... in an emergency always dial 9-1-1.

Know Where To Go

	VIRTUAL WALK-IN VISITS	WALK-IN VISITS	EMERGENCY ROOM	PRIMARY CARE		VIRTUAL WALK-IN VISITS	WALK-IN VISITS	EMERGENCY ROOM	PRIMARY CARE
Allergic reaction that causes swelling of the lips/tongue or difficulty breathing	CALL 911				Fever Any fever in patient under 3 months old or any patient with fever of 105-plus degrees, go to the ER	✓	✓	✓	✓
Simple animal or insect bites	✓	✓		✓	Headache If severe, go to the ER	✓	✓	✓	✓
Asthma attack (severe) (or call 911)			✓		Nausea or upset stomach	✓	✓		✓
Broken bone If skin is punctured, go to the ER or call 911		✓	✓		Numbness in arm or leg, difficulty speaking, face drooping	CALL 911			
Burns If severe, go to the ER		✓	✓	✓	Rashes	✓	✓		✓
Chest pain (severe)	CALL 911				Seizure			✓	
Concussion If loss of consciousness, go to the ER		✓	✓	✓	Sinus pain	✓	✓		✓
Coughs	✓	✓		✓	Shortness of breath If severe, go to the ER or call 911		✓	✓	
Cuts If uncontrolled bleeding, go to the ER	✓	✓	✓		Sore throat If child, go to Walk-In	✓	✓		✓
Diarrhea	✓	✓		✓	Sprained ankle		✓		
Dizziness	✓	✓		✓	Urinary tract/bladder infections	✓	✓		✓
Eye injuries	✓	✓			Vomiting If vomiting blood, go to the ER	✓	✓	✓	✓